



PROSPECTUS

RLMC

Rashid Latif
MEDICAL
COMPLEX



Rashid Latif
MEDICAL
COLLEGE



COLLEGE OF
PHARMACY



ALLIED HEALTH
NURSING
PHYSICAL THERAPY



DENTAL
COLLEGE



RASHID LATIF MEDICAL COMPLEX

Your Future Awaits



Rashid Latif Medical College

Rashid Latif Dental College

Rashid Latif College of Physical Therapy

Rashid Latif College of Pharmacy

Rashid Latif Institute of Allied Health Sciences

Rashid Latif Nursing College

WE PROVIDE YOU MORE THAN A

DEGREE

GRADUATE AS A
PROFESSIONAL



Our leading academics know how to get the best out of you during your studies.

We offer opportunities to allow you to build your own global network from within the Pakistan.

We provide an allround and memorable experience to take with you long after you graduate.

We're continually enhancing our facilities to aid your learning.

We value and nurture talent in its many different forms to ensure you have every chance to reach your full potential.

C O N T E N T S

Vision & Mission	02	Orthopaedics	41
Curricular Outcome	03	Anaesthesia	42
Student Code of Conduct	04	Psychiatry & Behavioural Sciences	42
Message from the Chairman	06	Radiology	43
Message from Chief Executive	08	Skills Lab	43
Message from the Principal	10	Medical Education	44
Message from the Vice Principal	12	RLMC United States	47
Recognition (Local/International)	14	Counselling & Wellness Center	48
Arif Memorial Hospital	15		
Hameed Latif Hospital	15	Rashid Latif Dental College	49
Why Choose RLMC?	16	Message From The Principal	50
Rashid Latif Medical College		Dentistry	51
- Location		Admission Process and Policy	53
- Vast Campus Area 28 Acres		Rules Governing Payment of Fee	54
- On Site Hostels		Important Rules and Regulations (Examinations)	55
- On Site Hospitals		Regulations for Internal Assessment	56
- Professional Faculty			
- Student Life		College of Pharmacy (Pharm. D)	57
- Student Facilities			
- Spacious Library		College of Physical Therapy (DPT)	63
- Latest Computer Lab			
Our Courses		Institute of Allied Health Sciences	65
Departments & Faculty	20	Message From The Principal	66
Anatomy	21	B.Sc. (Hons.) Medical Laboratory Technology	67
Physiology	23	B.Sc. (Hons.) Medical Imaging Technology	69
Biochemistry	25	B.Sc. (Hons.) Optometry & Orthoptics	70
Pathology	27	B.Sc. (Hons.) Speech & Language Pathology	72
Community Medicine	29	Dental Hygiene	74
Forensic Medicine	31	Dental Technology	75
Pharmacology	31	B.Sc. (Hons.) Nutrition	76
		Admission Procedure of Allied Health Sciences	78
Clinical Departments			
Medicine	34	Rashid Latif Nursing College	79
Surgery	36	Admission Procedure	82
Obstetrics & Gynecology	37	Computer Lab	83
Pediatrics	39	Student Life	84
Ophthalmology	40	Our Location	88
E.N.T.	41		

*Building Graduates
as caring*

PROFESSIONALS

www.rlmc.edu.pk

**750
beded**

*Medical & Dental
Hospitals*

OUR VISION

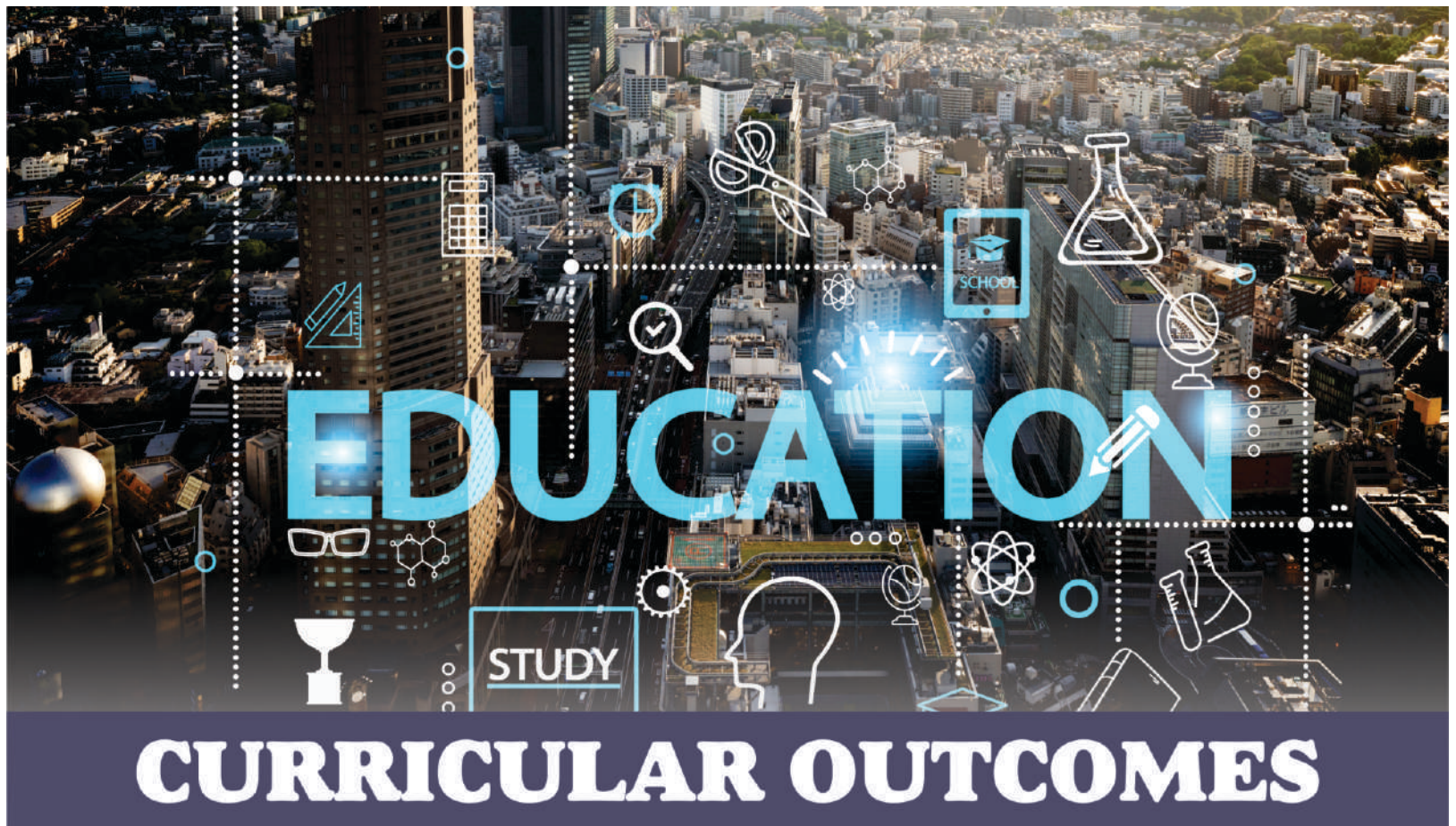
“To become the Centre of Excellence in the field of Health Sciences”.

OUR MISSION

“Empower Healthcare professionals with state-of-the-art education, instilling leadership, innovation, and compassionate patient care for a transformative impact on the global health landscape”.

OUR CORE VALUES:

- ✓ *Professionalism*
- ✓ *Honestly/integrity*
- ✓ *Leadership*
- ✓ *Innovation*
- ✓ *Patient-Centered Care/Ethical*



1. Application of Knowledge

Medical graduates will possess advanced medical knowledge and competencies.

2. Leadership

Medical graduates will demonstrate effective leadership abilities in healthcare settings.

3. Innovative Solutions

Medical graduates will apply innovative solutions to complex health challenges.

4. Diagnosis & Medical Management

Medical graduates will provide empathetic and patient-centered care.

5. Global Health Issues

Medical graduates will understand and address global health issues.

6. Team-Work

Medical graduates will work effectively within diverse healthcare teams.

7. Professional Management

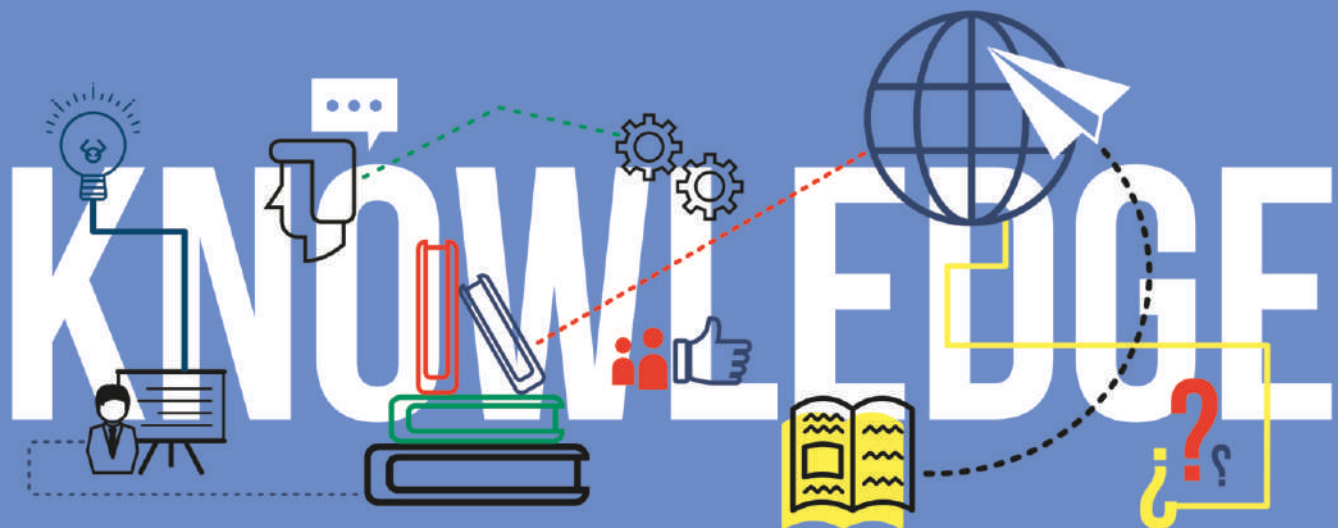
Medical graduates will commit to continuous personal and professional development.

8. Demonstrating Skills

Medical graduates will be able to demonstrate skills in cognition, identification and management of common clinical conditions.

9. Communication & Interpersonal Skills

Medical graduates will develop critical thinking, communication and adaptability skills necessary for effective healthcare practice.



Student Code of Conduct

Procedures and Guidelines

Following procedures and guidelines will be acted upon:

General Conduct of Students:

All the students will focus on

- Their appearance, personal hygiene and behavior should be modest and mature, law abiding and civilized.
- Dress in a simple, decent and appropriate manner.
- Refrain from any behavior that may cause damage to the college property.
- Ensure that their actions in any way do not threaten or endanger the health, safety or security of other persons.
- Abstain from inappropriate behavior including the use of offensive language, gestures, quarreling or remarks with faculty, staff, students or patients.
- Refrain from physical violence, frightening & pushing.
- Use social media on sites, public forums judiciously & responsibly.

Academic Conduct of Students:

All students will:

- Diligently involve them in learning and study of course work.
- Attend all academic activities in accordance with the regulations on attendance of students by the Pakistan Medical & Dental Council (PM& DC).
- Abstain from the behaviors that interfere with the learning environment.
- Avoid those behaviors that have been identified as disturbing by faculty or other students.
- Show respect while working with human cadavers & human tissue.
- Practice integrity within all learning and assessment situations.
- Avoid cheating in the examinations.
- Adhere to ethical principles while performing research and seek ethical approval from the Institutional Research Ethics (IRE) Committee.

Avoid Discrimination:

All the students will:

- Participate in the care provision to a person without any consideration of race, religion, ethnicity, socioeconomic status, gender or age.
- Treat all patients, faculty, staff, classmates, medical specialists, and health care team members with respect and consideration without regard to gender, age, race, religion, ethnicity or class.

Respecting Patients, their families and maintaining confidentiality:

All the students will:

- Respect dignity and privacy of patients.
- Regard needs and values of patients and their family members.
- Handle the medical information /record of the patients with confidentiality.
- Handle medical records according to the hospital policy with utmost integrity.

- Treat patients politely and considerately.

Respecting faculty, students and staff:

All the students will:

- Ensure that the professional relations with all the members of the medical community are marked with civility.
- Show respect to doctors, nurses, allied health professionals and all other members of the health care team.

Requests for Prior Permission:

Students will be required to take prior permission, in writing, for the following:

- Corresponding with the press or other media for mass communication on behalf of RLMC / commenting on the internal affairs of the college
- Organizing any co-curricular activity in the college.
- Inviting any public personalities or government officials in their official capacity on to the college campus.
- Starting or forming a society, whether as part of co-curricular or academic activities e.g. for research.

Integrity:

All the students will:

- Abide by policies, procedures and guidelines.
- Demonstrate honesty and integrity in all aspects of their education; avoid plagiarizing or assisting others in commissioning of such acts.
- Seek consultation and supervision wherever they are unsure of their level of knowledge and/ or experience.
- Behave with the highest standards of honesty, morality and discipline in their interactions with staff, faculty and patients.

Conduct outside the College:

All the students will:

- Have to be mindful that their behavior not only reflects on themselves, but also on the college and the medical profession.
- Observe the code of conduct when representing at an inter-collegiate activity.

Substance Abuse:

All the students will:

- Avoid substance abuse including cigarette smoking alcohol, prescription and non-prescription/ street drugs and illegal drugs, as this may lead to behaviors that endanger patient safety.

Refrain from unlawful possession or distribution of drugs or alcohol.



CHAIRMAN
PROF. RASHID LATIF KHAN



First Doctor from Pakistan to do
MRCOG & FRCS (UK) 1967-68

First Doctor from Pakistan to
introduce Diagnostic
Laproscopy (1974)

Wrote First Textbook of
Gynaecology (1982)

First to introduce IVF
technology (1984)



First Gynaecologist from
Pakistan to be invited as
Examiner by the Royal College
of Obstetricians &
Gynaecologist, London U.K.
(1985)

Delivered First IVF baby of
Pakistan (1989)

Founder President IVF
Society of Pakistan



First Gynaecologist of Pakistan
to be awarded
SITARA-E-IMTIAZ (1992)

Founder President of South
Asian Federation of
Gynaecology (1996)

First Professor Emiritus of
PGMI (1998)

At the time of partition and independence of Pakistan, we had inherited reasonably developed training institutions for healthcare personnel. King Edward Medical College which was one of the two at the time has been a mother institution for not only Pakistan but almost for the entire Middle East and South Asia combined.

At present, in Pakistan about ninety medical institutions exist in both the public and private sectors. With this growth in the number of medical institutions comes a greater responsibility of producing highly skilled, empathetic, ethical and dynamic doctors who could compete at a world stage. In many instances, attaining a medical degree is considered the end goal while in my opinion it is just a stepping stone towards serving mankind and leaping beyond one's own capabilities.

This modern era of information highways and digital age calls for today's doctors to be well versed not just in the science of medicine but also to exhibit a well rounded personality with a sound focus on communication skills and research & development. Learning how to learn and seeking counsel when needed are two important factors that help determine success for a student.

It is my strong belief that students who graduate from RLMC will prove to be masters in the field of medicine with a thorough understanding of the world around them. RLMC will also develop as a center of excellence for the future training of not only doctors and nurses but other paramedical personnel.

The attached Arif Memorial Teaching Hospital which has also been built together with the college will also help serve the needs of the local community besides being a source of learning for students of RLMC. The location of the hospital at the periphery of Lahore district will prove to be source of comfort and well being to the rural population around it.

Since my retirement I had always resisted the temptation of setting up a medical and nursing college because I had the feeling that I would not be able to do justice to the educational and moral needs of these institutions. But, today with a great team of experienced professionals and faculty by my side, I am confident that RLMC will be a source of pride for both the healthcare profession and Pakistan.



MESSAGE from the **CHIEF EXECUTIVE OFFICER**

I'm delighted that you are considering studying at Rashid Latif Medical Complex, one of the top private medical colleges in Pakistan. Whatever your aspirations, we can help you on the journey to your future career. As a RLMC student you will graduate with more than just a degree.

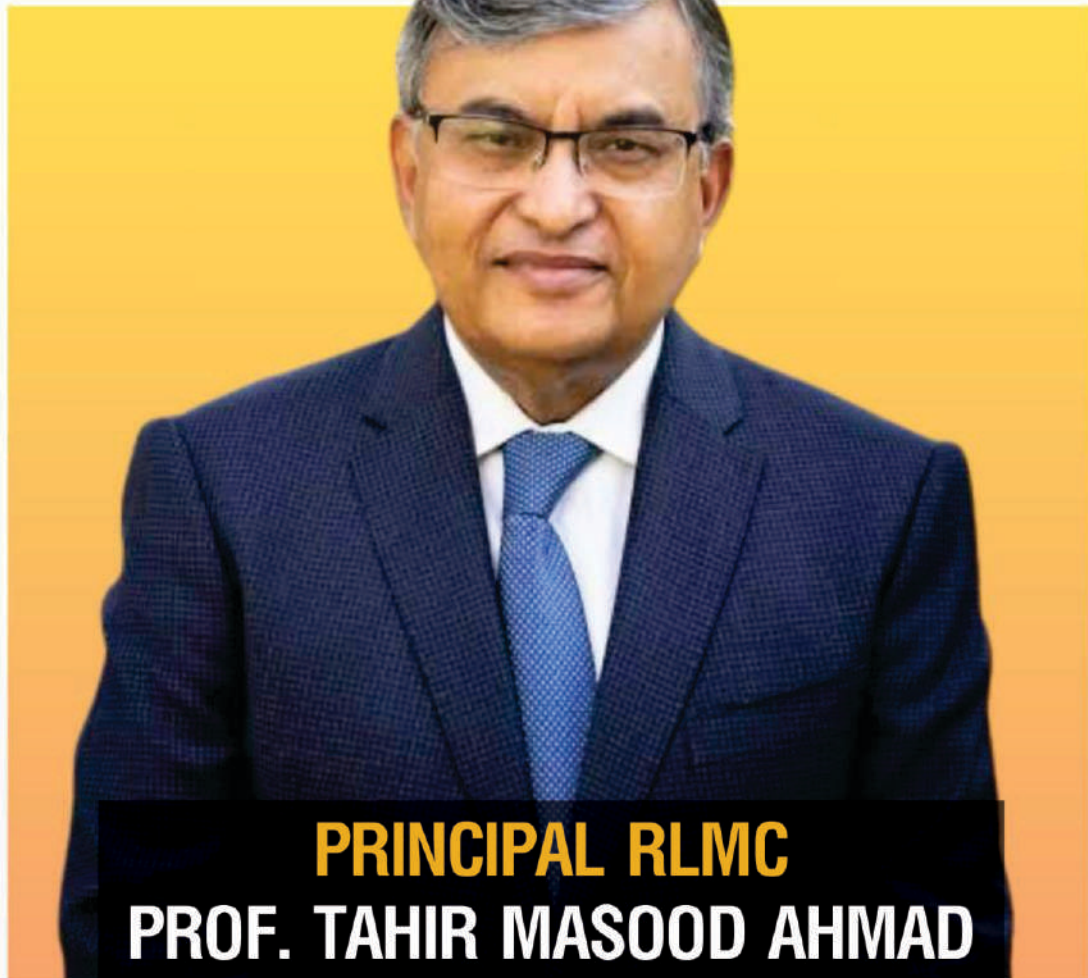


The opportunities and experiences at RLMC will help you grow as an employable, entrepreneurial and a confident global citizen. We will help you to graduate as a professional.

Our prospectus is full of information to help you make an informed choice about your higher education future, as we understand what an important decision choosing the right medical college can be.

**We look forward to
seeing you soon.**

Sabahat Khan



PRINCIPAL RLMC
PROF. TAHIR MASOOD AHMAD



Prof of Pediatrics
Rashid Latif Medical College Lahore

Former Dean & Prof Emeritus
University of Child Health Sciences
The Children's Hospital Lahore



Member Regional Certification
Commission
Poliomyelitis Eradication
Eastern Mediterranean Region of
WHO

Member National Immunization
Technical Advisory Group Pakistan

A career in medicine can be very rewarding as a doctor can make a real difference in people's life by helping to alleviate pain and suffering. It is however highly competitive and demands that those who aspire to adopt this profession should aim to have compassion, altruism and excellence. Medical education in Pakistan has changed over the past decade or so because of the fact that private sector has emerged as a key provider of education services both in absolute terms and relative to public sector.

The contemporary trends in medical education worldwide demand that future doctors should have practical knowledge and skills and should effectively manage the health problems of the community in a competent and humane manner. In this era of rapidly enhancing information, the student of today must be committed to life-long learning to update the knowledge. Every medical college needs to play a part in establishing infrastructure to provide a conducive environment for continued learning, research, evidence-based practice and application of new technologies to patient care.

Rashid Latif Medical College is a purpose built institution that provides an ideal infrastructure to produce health professionals who are skillful, competent, well groomed, eager to provide quality health care to the society and maintain high ethical standards. The mission of Rashid Latif Medical College is to improve the quality of health-care which will happen only if the quality of medical education is taken care of. The college lays great emphasis on quality of teachers. There is very well developed department of medical education which is engaged in

teachers training and updating teaching methodologies in accordance with the changing trends of medical education. This systematic, structured and continuous improvement helps in ensuring that the product of RLMC is always relevant to the current demands and quality is assured during each and every stage of student's career.

RLMC has already developed its rich Alumni and the six batches of trained, dynamic and skillful doctors who have graduated from this college are serving in Pakistan and abroad. Research activities have always remained the priority of this institution and there is always an endeavor to offer a mentored and structured educational program which would train students and health professionals in translational and clinical research ultimately paving the way to evidence-based practices.

I welcome the new students to RLMC with the hope that the time a student spends with us will be an excellent educational experience for him and at the end of his stay at RLMC, we hope to see a well rounded professional who has academic excellence, altruism, a strong character and motivation for a career in medicine.





VICE PRINCIPAL RLMC
PROF. DR. MUDASSAR ALI

You have made it to one of the leading private medical and dental institution, of the country. Congratulations are in order. I take this opportunity to congratulate the parents, guardians and families of such brilliant young men and women.

We are still struggling to leave the ravages of Corona pandemic behind us and we welcome you earnestly. Your stay with us will lead to your transformation as a person, as a professional and as a friend and a colleague. For those of you who choose to become clinicians and come in contact with patients you must remember to keep patients first.

I have a four points plan for you all and it is very basic and will ensure that all of you who develop a habit of following these shall excel in their professional life.

First point is to Aim High. Michelangelo said and I quote “ The greater danger for most of us lies not in setting our aim too high and falling short; but in setting our aim too low and achieving it. At this juncture I would also inform you about the college motto, “Ne plus Ultra”. The highest point, capable of being attained, the ultimate.

Second is about being passionate, here I quote Rumi “I once had a thousand desires but in my one desire to know you all else melted away” You should have this passion in you and have faith to develop it!

Third point is Empowerment, it means to enhance your capacity to dream and than to achieve those, it goes beyond goal setting. It’s about evolving into a new, you a better you. It’s about growth, becoming

better each day. It’s about reflection, innovation and becoming better each day.

The fourth point is to Persevere. Keep doing it, remain focused and do it, again and again and again. Einstein said and I quote “ Its not that I am so smart, it’s just that I stay with problems longer”.

To sum it up, Aim High, Be passionate, Empower yourself and evolve into better you each day and Persevere.

A handwritten signature in black ink that reads "Mudassar Ali". The signature is written in a cursive, flowing style.

National &
International
MOUs
for student & faculty
training

Guidance classes
for preparation of
PLAB
USMLE
FCPS

**RECOGNITIONS &
AFFILIATIONS**

Recognized by:
Pakistan Medical & Dental Council Directory

Listed in
International Medical Education Directory

Affiliate with:
University of Health Sciences Directory

Approved by:
Ministry of Health

Listed in:
WHO Avicenna Directory

Recognized by:
CPSP for FCPS Training

AFFILIATED HOSPITALS

ARIF MEMORIAL TEACHING HOSPITAL (750 Beds)

LAHORE CARE HOSPITAL (100 Beds)

This is a purpose built 750 bed hospital designed specifically as a teaching facility. Besides fulfilling the requirements of the medical college it provides much needed comprehensive health coverage to the surrounding population in all major disciplines at affordable cost. The hospital has excellent OPD, Diagnostic and Treatment facilities and 24 hours emergency. Arif Memorial Hospital is also recognised by CPSP for post-graduate training in the fields of Surgery, Medicine, Obstetrics & Gynaecology, Paediatrics and Ophthalmology.

MESSAGE MD

WE ARE WHAT WE REPEATEDLY DO; EXCELLENCE IS THEN NOT AN ACT BUT A HABIT (Aristotle) Arif Memorial teaching hospital has completed a decade of providing high quality health care services to the ailing humanity and in imparting the highest standard of training in all clinical disciplines to the under and post graduate students under the recognition of PMC, CPSP and other national and international accreditation bodies. At AMTH the needs of the patient comes first, for us every patient is the only patient. We engage patients and their family members in the health care process, believing in the fact that this approach will be more effective in eliminating inequalities and improving health for all. We at AMTH are striving to heal the heart mind, soul and body of our patients, their families and ourselves. AMTH is a trust run teaching hospital that is striving to achieve many milestones moving towards provision of excellent services. AMTH In line with the vision of RLMC and In the course of time has recorded an unprecedented improvement in health work force training, welfare and development resulting in integrated quality service delivery to our teaming patients. The management and staff of the hospital together were able to take the AMTH to its enviable heights, in creating a competent, caring, compassionate and motivated health work force. The mission and zest of the AMTH is to support RLMC in promotion of Medical Research and Education, to produce quality medical graduates and post graduates that can effectively serve the communities through provision of best health care facilities.

OUR BELIEVE IS TAKE CARE OF THE PATIENT EVERYTHING ELSE WILL FOLLOW



Dr. Babar Wattoo
Medical Director



Recognized by
CPSP
for Post-Graduate
FCPS Training

Why choose RLMC ?



14

Faculties Institutes &
School of
Study

Why not visit
us & get
taste of the
campus life



Must know about OUR FACILITIES

We are very pleased to tell you about our campus facilities that distinguish us from all the leading medical colleges. RLMC provides opportunities and experiences, that build student community and helps them grow in personal and professional capacity. Healthy competition is promoted among intellectually curious students and prizes are offered as incentives to high-achievers.

Computer Lab

Latest Computers are available in our computer lab to facilitate our students. Our computer lab offers round the clock internet facility to all of the students.

About our Culture

The culture of Lahore is a manifestation of the lifestyle, festivals, literature, music, language, politics, cuisine and socio-economic conditions of its people, which is reflected in the campus life.

Why choose RLMC ?



The purpose-built campus was designed in a way that would allow the students to experience university life at its best. It encompasses 28-acres of lush green land and is located in the suburbs of Lahore, easily accessible by public and college transport. The building offers spacious lecture halls, well-equipped laboratories, and a state-of-the-art audiovisual auditorium for curricular and extra-curricular activities.



Play Ground

RLMC College is a private college on 28 acres. A purpose built campus with separate playgrounds for cricket, football and basketball.

Being a complete residential campus, it is important that there is a wide variety of sports facilities to keep students engaged and physically fit. Therefore, the college offers a vast ground and basketball court for sports enthusiastic students.

College Cafeteria

A cafeteria has been established within the campus where food is hygienically prepared in a clean and well maintained kitchen. The cafeteria has an exclusive area for the staff and students and offers breakfast, lunch and dinner at affordable rates.

The capacious college cafeteria offers a wide range of hot and cold options for breakfast, lunch and dinner while maintaining strict hygiene standard during food processing.

Mosque

A beautiful Mosque has been built on campus. At RLMC we respect all religions & cultures and focus on moral character building.

Why choose RLMC ?

The attached hospitals are the country's most successful and highly recognized healthcare centers with a dynamic foundation of progressive care, practice, education and research following the footsteps of living legend Prof. Rashid Latif Khan (Sitara E Imtiaz).

The 600+ bed teaching hospital, Arif Memorial Hospital, is at walking distance from the college campus. Its superior location has allowed it to drain nearby villages and town, making it a pioneer health facility in this area. The amplified patient contact levels make certain that the students see multiple and diverse cases each day.



Professional Faculty

The highly-qualified and experienced faculty of RLMC has profound commitment to medical sciences and is fully motivated to impart knowledge to the students. They are focused on creating an environment where the students can thrive and have stress-free, interactive learning experience and enjoy wide array of training facilities.

Each faculty member mentors ten students. The small size of mentoring sessions makes sure that the students are being counselled individually regarding career progression, research publications and stress management. This strategy allows the students to build affirmative relationships with faculty members and other students.

Skills Lab

The students are given practical training class in Skills lab to polish their clinical skills.

Common Rooms

Separate common rooms for boys and girls are located on the ground floor of the college building where students can relax and have discussions. On every floor of the college there are separate washroom facilities for girls and boys.

Why choose RLMC ?



College has
its own

CRICKET GROUND
on campus

Societies
Activity Groups
Sports Club



Our Library

Our library has latest editions of medical textbooks and reference books to assist students during their preparation examination.

A spacious library is located in a separate block adjacent to the college building.

It has all the essential text and reference books along with reference journals.

The books are indexed and there is an e-library which has access to on-line journal and books.

The library has been organized to meet the requirements of students and teachers and facilitates research work.

It has following sections:

Basic Sciences | Clinical Sciences | Reference Books | Sections

Reading Area | E-Library | Audio Visual Section | Urdu/English | Literature

Transport

Public transport is available at walking distance. The college runs a daily shuttle service from Hameed Latif Hospital (Opposite Qaddafi Stadium on Ferozpur Road) to Rashid Latif Medical College and back for the convenience of the faculty and the students.



Departments & Faculty

There are two broad components of undergraduate medical education:

1. Basic Sciences
2. Clinical Department

The basic sciences comprise of Anatomy, Physiology, Biochemistry, Pharmacology, Pathology, Community Medicine and Forensic Medicine.

Major clinical subjects are Medicine, Surgery, Obstetrics & Gynaecology, Paediatrics, Ophthalmology and ENT. There are various subspecialties of the above mentioned clinical departments.

Traditionally, the medical syllabus was introduced to medical students through the subjects of Anatomy, in order to make them aware of the structure of the human body, and Physiology, the study of normal function of the body systems. Only basic sciences subjects were taught to the students until they entered the clinical years where clinical subjects were taught.

Over the last few years however, the strategy of medical education has evolved and more emphasis is now laid on combining the basic sciences with the clinical subjects in the initial years of the medical curriculum. The objective is to provide an integrated approach to learning for better understanding of structure, function and the process of disease.

As an affiliate of University of Health Sciences (UHS), Rashid Latif Medical College follows the syllabus outlined by the university.

According to this syllabus, the students learn the subjects of Anatomy, Physiology and Biochemistry in the first two years, with specific curricula for first and second years. In the third year the remaining subjects of basic sciences, i.e., Pathology, Pharmacology, Forensic Medicine and Community Medicine are to be learnt while the clinical subjects are also introduced. Fourth and final years are mainly taken by the clinical sciences. Every effort is made while preparing the curriculum for first and second years to incorporate the clinical faculty to take lectures along with the basic sciences faculty.

Learning of sciences is not enough to become a good doctor. As a professional in the noble science of medicine the doctor has a special place in society, bringing in its wake certain responsibilities. While these relate mainly to the doctor's conduct and behavior, the doctor also needs to have a perspective of history with knowledge of current affairs. In order to meet these needs, UHS has introduced the subjects of Behavioral Sciences, Islamiyat and Pakistan Studies in the first two years of the programme.



DEPARTMENT OF ANATOMY



“

To meet new challenges, implementation of clinically orientated anatomy teaching, along with the continuous learning opportunity for faculty, can enhance interest in young scholars for the subject.

”

Prof. Dr. Nazreen Sharif
Anatomy Dept.

Dissection Hall

The large, well ventilated dissection hall can accommodate more than 150 students where they will get an opportunity to work on cadavers for dissection and demonstration. There is a state of the art mortuary room for the cadavers.

Histology Lab

Spacious well equipped laboratory. Multihead teaching, microscope, projection microscope with large LED is used to enhance students learning.

Museum

Latest imported models of anatomy are displayed in a spacious Museum located across the Dissection Hall. The museum also has a large number of dissected specimens to illustrate various structures on actual parts of the human body.

FACULTY



We should believe in dreaming Big, In dreams we plant the seeds of our future. By the grace of Allah Almighty and with the support of our beloved parents and devoted teachers all our dreams can come true. Joining RLMC was a choice and RLMC proved my choice the best. RLMC dedicated teachers inspired and motivated me. RLMC teaching methodology is quite effective. Thank you RLMC for making an huge impact on my life.



Prof. Nazreen Sharif

Professor
MBBS, M.Phil

Prof. Fatima Qaiser

Professor
MBBS, M.Phil, CHPE

Dr. Attya Shahid

Associate Professor
MBBS, M.Phil, CHPE

Dr. Huma Qamar

Associate Professor
MBBS, M.Phil, CHPE

Dr. Uzma Hanif

Senior Demonstrator
MBBS, M.Phil

Dr. Kinzah

Senior Demonstrator
MBBS, M.Phil

Dr. Momina

Senior Demonstrator
MBBS, M.Phil



“ Physiology, the queen of medicine, spans the study of the functions of the entire spectrum from molecules to man. At the department of Physiology, we aim to elucidate fundamental ways of communication within in terms of structure of the human body.

Prof. Mudassar Ali ”
Head of Physiology Dept.



DEPARTMENT OF PHYSIOLOGY

The knowledge of fundamental principles and facts of human physiology forms the basis of medical practice. Every modern branch of clinical and biomedical research has its physiological roots so faculty of physiology department has a very disciplined, experienced, professional, innovative and conceptual and integrated approach towards the subject and covers all the aspects of altruism towards their students of all concerned disciplines.

Department of Physiology, established in 2010 under the experienced chair of Professor Shehnaz Javed Khan, has a long-standing tradition of excellence. The current, Physiology Department led by Professor Bilquis Akhtar is assisted by Dr. Mudassar Ali and Dr. Faheem Mahmood as associate professors and Dr. Saadia Islam and Dr. Tashfeen Ikram as assistant professors. The committed team aims to impart the advanced, disciplined and exam oriented approach in the students. The department is honored to maintain the legacy of distinctions and pass percentage of more than 90% in Physiology from the last 10 years. The department embarks upon an exciting new level in its history, when students outshined with 1st and 2nd Position in UHS Professional exams with Gold Medals in Physiology.

Mission:

The mission of the department is to impart, create and disseminate knowledge and to develop informed, ethical and responsible doctors, who are concerned to lead and serve the nation.

Facilities:

Physiology Departments provides state of the art facilities to the students as per the requirements of Pakistan Medical Commission

Facilities:

- Physiology Laboratory fully equipped
- Lecture Halls
- Tutorial Rooms
- Physiology section in College Library
- Physiology E- Library on college website
- Faculty Offices

Disciplines

- 1st year and 2nd year MBBS (Rashid Latif Medical College)
- 1st year BDS (Rashid Latif Dental College)
- 1st year and 2nd year DPT (Rashid Latif College of Physical Therapy)
- 1st year BSc & Optometry (Rashid Latif Institute of Allied Health Sciences)
- 1st year BSN (Rashid Latif College of Nursing)
- MLT (Arif Memorial Paramedical College)

FACULTY

Prof. Bilquis Akhtar

Professor
MBBS, M.Phil

Prof. Mudassar Ali Khan

Professor / Vice Principal / HOD
MBBS, M.Phil, CHPE, PhD (Scholar)

Dr. Sadia Islam

Associate Professor
MBBS, M.Phil

Dr. Tashfeen Ikram

Associate Professor
MBBS, M.Phil

Dr. Saman Saeed

Associate Professor
MBBS, M.Phil, PhD (Scholar)

Dr. Sumbol Khalid

Assistant Professor
MBBS, FCPS

Dr. Shazia Sukhera

Assistant Professor
MBBS, M.Phil, PhD (Scholar)

Dr. Madiha Akram

Assistant Professor
MBBS, M.Phil, CHPE





“

Biochemistry is the study of chemical processes in living organisms at cellular and molecular level and governs all living organisms and living processes. Biochemistry and medicine enjoy a mutually cooperative relationship. It makes significant contributions to the fields of cell biology, physiology, immunology, microbiology, pharmacology, and toxicology, as well as the fields of inflammation, cell injury, and cancer. Department of Biochemistry at RLMC is fully equipped to train the students to become good learners, leaders, professionals and researchers.

”

Prof. Sadia Qureshi
Head of Biochemistry Dept.



DEPARTMENT OF BIOCHEMISTRY



FACULTY

Prof. Sadia Qureshi

Professor
MBBS, M.Phil, PhD

Prof. Muhammad Fahim-ul-Haq

Professor
MBBS, M.Phil

Prof. Sumera Saghir

Associate Professor
MBBS, M.Phil, PhD (Scholar)

Dr. Adnan Sadiq

Associate Professor
MBBS, M.Phil, PhD (Scholar)

Dr. Shama Akram

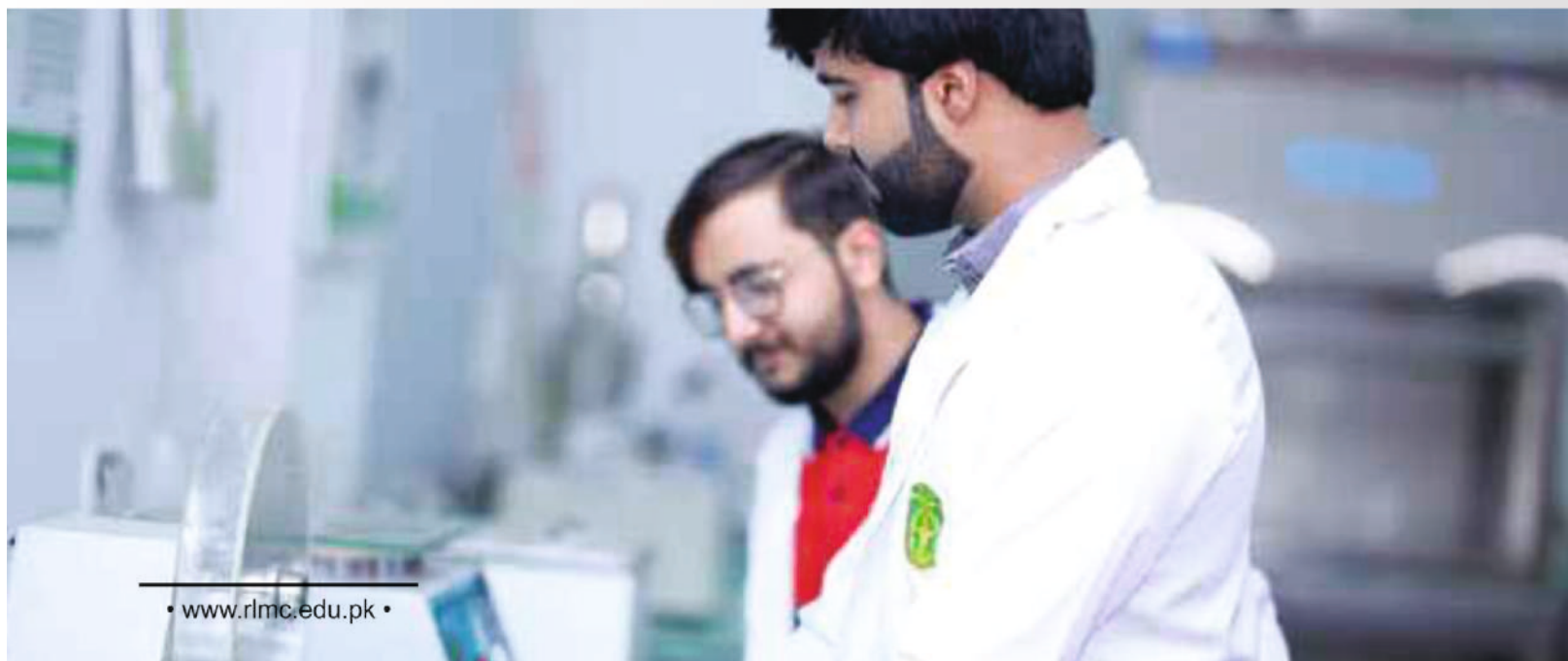
Assistant Professor
M.Phil, M.S.C Bio, PhD

Department of Biochemistry is located on the ground floor across the department of Physiology being its mirror image. Modern learning aids have been provided to ensure that the students learn the subject in an interesting and interactive way.

Laboratory

The spacious laboratory has colorimeters, centrifuges, distillation units, electronic balances, microscopes, a flame photometer, automated pipettes and dispensers. The students have an access to every kind of equipment required to undertake practical demonstrations of Biochemistry.

Adjoining the laboratory are the faculty offices which provide closer interaction between the faculty and the students.





**DEPARTMENT OF
PATHOLOGY**



The Pathology department has two laboratories, which have the latest equipment. These laboratories cater for Microbiology, Histopathology, Hematology, and Chemical Pathology.

Pathology is a branch of medicine that deals with the nature of disease and its causes, processes, development, and consequences.

Laboratory

This important subject bridges the clinical and non-clinical subjects. The department has four sections, Microbiology, Histopathology, Hematology and Chemical Pathology.

The Pathology teaching sessions are a mix of both theoretical and practical classes where students will have an opportunity to observe and participate in diagnosis of patients admitted in the wards. Regular symposia, seminars and tutorials are held in the department of Pathology.

The department has a spacious museum displaying specimens and several detailed and highly informative charts for the guidance and better understanding of the students.

FACULTY



Prof. Sofia Waheed

Professor / HOD
MBBS, FCPS (Heam), MHPE

Dr. Nosheen Khurram

Associate Professor
MBBS, M.Phil (Histo), MME

Prof. Farzana Amjad

Professor
MBBS, M.Phil (Heam)

Dr. Maheen Rana

Associate Professor
MBBS, M.Phil (Heam)

Prof. Naila Atif

Professor
MBBS, FCPS

Dr. Qurat-ul-Ain Javaid

Associate Professor
MBBS, M.Phil (Histo)

Prof. Sahar Mudassar

Professor
MBBS, M.Phil (Micro), PhD, CHPE

Dr. Imran Yousaf

Senior Demonstrator
MBBS, M.Phil (Histo)

Dr. Nasim Aslam Ghumman

Associate Professor
MBBS, M.Phil (Histo)

Dr. Almas Raza

Assistant Professor
MBBS, M.Phil

Dr. Bushra Adeel

Associate Professor
MBBS, M.Phil (Micro)

Dr. Anum Mehmood

Assistant Professor
MBBS, M.Phil





“ Students have field trips and visits to rural health care facilities where they have the opportunity to correlate the classroom learning with social, economic and medical conditions of the community.

”
Prof. Maaz Ahmad
Head of Com. Med. Dept.



DEPARTMENT OF Community Medicine



FACULTY



Prof. Maaz Ahmad

Professor
MBBS, MCPS, FCPS

Dr. Syma Arshad

Associate Professor
MBBS, MPH

Dr. Fayyaz Atif

Associate Professor
MBBS, MCPS, FCPS, DCH

Dr. Asma Kanwal

Assistant Professor
MBBS, MPH



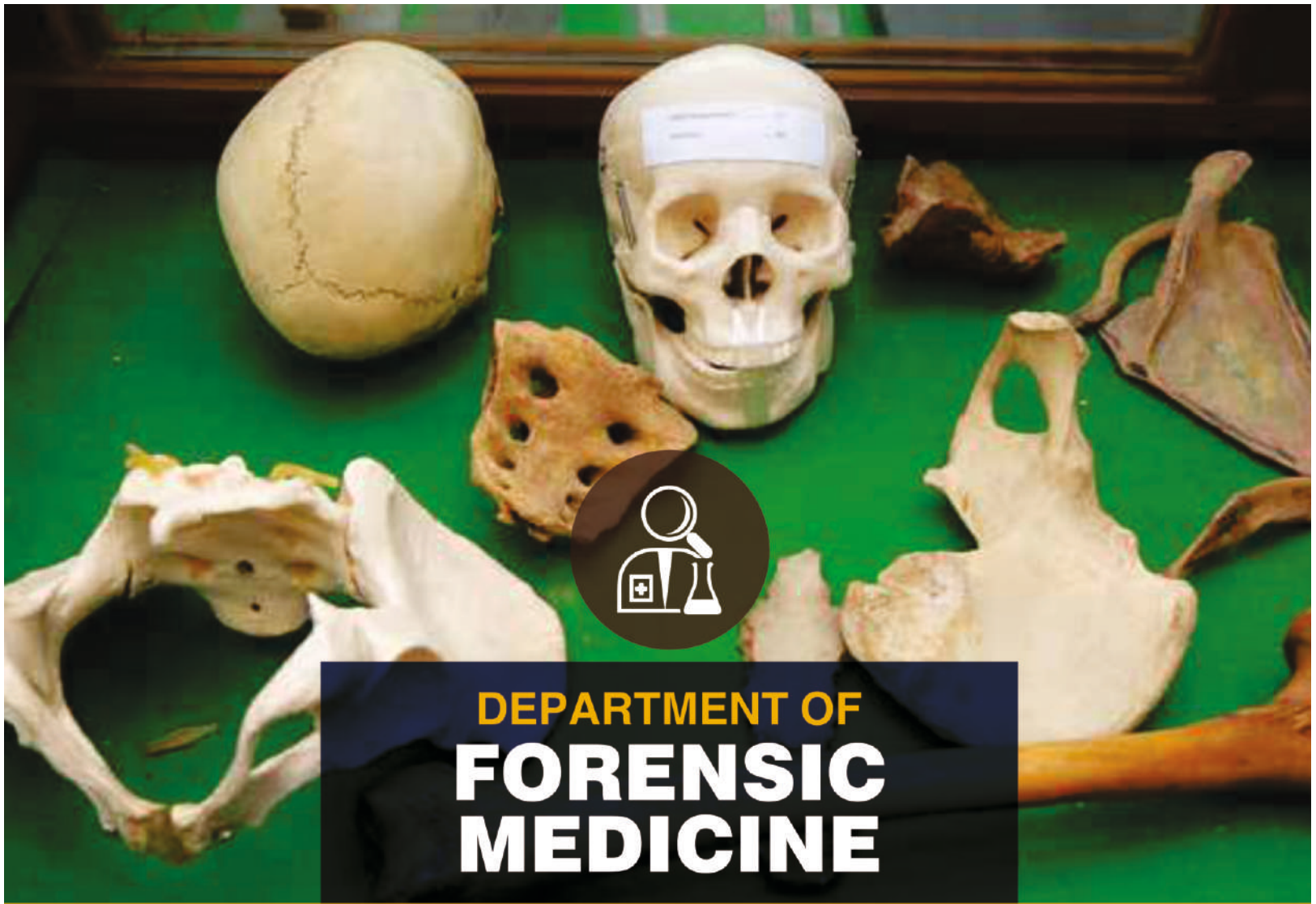
Dr. Fizza Anwar

Assistant Professor
MBBS, M.Phil



The Department of Community Medicine aims to serve humanity by stressing on immunization and simple methods of improving the health of the community at primary health care level thus making a major contribution in prevention of diseases in the community at large.

The department features the health models to complement their on-the-field mode of training.



DEPARTMENT OF FORENSIC MEDICINE

FACULTY

Forensic Medicine brings the investigative capabilities of modern medicine to aid the law and justice. Students have an opportunity to learn legal aspects of medicine and the training as to how medico-legal cases are documented.

Museum

This department has a spacious museum with elaborate models illustrating the forensic aspects of medicine. Special models explaining the science of criminology along with commonly used weapons are on display.



Prof. Shaukat Ali

Professor
MBBS, DMJ

Dr. Khizer Hayat

Assistant Professor
MBBS, DMJ

Dr. Nida Yousaf

Assistant Professor
MBBS, DMJ

Dr. Muhamamd Irfan Asghar

Demonstrator
MBBS



DEPARTMENT OF PHARMACOLOGY



“ At our RLMC department of Pharmacology we take the students through their required course with zeal and enthusiasm and expect the same from them. A good physician has to be a good pharmacologist. With a well qualified faculty students will gain professional experiences here.

Prof. Samina Karim
Head of Pharmacology Dept.

FACULTY

A good physician has to be a good pharmacologist. Students will gain a thorough knowledge of medications, such as various routes of administration, mechanisms of action, pharmacokinetics, adverse drug reactions and dosage schedules. With a well-qualified and experienced faculty guiding them, students can look forward to an interesting learning experience.

Laboratory & Museum

Pharmacology department has a separate fully equipped laboratory that provides the resources for practical training in experimental pharmacology and clinical pharmacology. The department has a well-designed museum displaying neatly mounted specimens and several detailed and highly informative charts and graphs of various types.

Faculty offices and demonstrator rooms are also available in the department. A separate tutorial room is attached with the laboratory.



Prof. Samina Karim

Professor
MBBS, M.Phil

Prof. Sajida Malik

Professor
MBBS, M.Phil

Dr. Salman Aziz

Associate Professor
MBBS, M.Phil, CHPE

Dr. Novida Manzoor

Associate Professor
MBBS, M.Phil,
Ph.D (Scholar), CHPE

Dr. Sheikh Maria Qammar

Assistant Professor
MBBS, M.Phil

CLINICAL DEPARTMENT

Arif Memorial Hospital, the on-site teaching hospital has all the major specialties housed in a purpose built building. The hospital has been designed to facilitate smooth patient flow and is in line with current best practices of hospital design.

More than
300,000

Free Patients Treated
at AMTH

DEPARTMENT OF MEDICINE

FACULTY

Laboratory

The department is headed by a senior professor. There are 120 beds at Arif Memorial Hospital and 55 beds in Hameed Latif Hospital.

Starting with General Medicine, the department will be adding specialties like Cardiology, Gastroenterology, Nephrology, etc.

A full ward is dedicated to high dependency beds as in a CCU with full monitoring facilities. All the clinical departments have full diagnostic backup facilities and a fully equipped CCU.

Prof. Aziz ur Rehman

Professor
MBBS, FCPS

Dr. Riaz Ansari

Associate Professor
MBBS, FCPS

Prof. Anjum Rasheed Butt

Professor
MBBS, FCPS

Dr. Fahad Mehmood

Assistant Professor
MBBS, FCPS

Prof. Mansoor ud Din Sajid

Professor
MBBS, FCPS

Dr. Zunaira Afzal

Assistant Professor
MBBS, MD (Cardiology)

Prof. Asma Kazi

Professor
MBBS, MCPS, FCPS

Dr. Waqas

Assistant Professor
MBBS, FCPS

Prof. Sadaf Yousaf

Professor
MBBS, FCPS

Dr. Aisha Aziz

Associate Professor
MBBS, FCPS

Dr. Muhammad Irfan

Assistant Professor
MBBS, FCPS

FACULTY

Prof. Muhammad Sarfraz Ahmed

Professor
MBBS, FRCS (UK), Diploma in Urology

Prof. Afzal Sheikh

Professor
MBBS, FRCS, FRCS Ed.

Prof. Abul Fazal Ali Khan

Professor
MBBS, MCPS, FCPS

Prof. Junaid Habib Khan

Professor
MBBS, FCPS

Prof. Ahsan Khan

Professor
MBBS, FCPS

Prof. Faheem Anwar

Professor
MBBS, FCPS

Prof. Muhammad Akil

Professor
MBBS, FCPS

The layout of OT suite is well planned & scientifically designed with an adjacent post-operative/recovery area and surgical ICU. The emergency department has its own fully equipped operating theater. We cater surgical needs to all emergency patients round the clock.

The surgical department is accredited with College of Physician & Surgeons of Pakistan for postgraduate training leading to FCPS in general surgery. The internees and fellows are all trained in a methodical way. The academic mission is to train next generation of surgeons as leaders. Surgical education and research is integrated to achieve the goal.

Prof. Sarfraz Ahmad
Head of Surgery Department

Dr. Ghulam Shabbir

Associate Professor
MBBS, FCPS

Dr. Rabia Ikram

Assistant Professor
MBBS, FCPS

Dr. Rana Shoaib Aslam

Assistant Professor
MBBS, FCPS

Dr. Sajid Iqbal

Assistant Professor
MBBS, FCPS

Dr. Khalil-ur-Rehman

Assistant Professor
MBBS, MS

Dr. Muhammad Saqib

Senior Registrar
MBBS, MS

' It's a combination of hardwork, determination, and top-notch faculty at RLMC that has allowed me to succeed in my endeavors. It wouldn't have been possible for me to attain this level of success without them. They strive to bring out the best in every student and I consider myself lucky to have chosen RLMC to pursue medicine . '





DEPARTMENT OF SURGERY

This department has 120 beds at Arif Memorial Hospital. It is supported by 06 operating theaters. The layout of the OT suite is scientifically designed with an adjacent post-op/recovery area and the surgical ICU. There is provision for all types of surgical procedures including laparoscopic surgery. The Emergency Department has its own fully equipped operating theater.

This department is recognized by College of Physicians & Surgeons Pakistan for post-graduate training leading to FCPS. The Department consists of 2 Professorial units headed by distinguished & highly skilled Professors. The Department of Surgery offers extensive academic program, for medical students; that exposes students to a combination of formal teaching instructions and patients' exposure enabling them to develop knowledge, skills, and attitude necessary to learn essential surgical competencies which are cornerstone in becoming a competent & complete clinician.

The subject of surgery is taught in a methodical way starting from 3rd Year MBBS to Final Year MBBS. Students are taught in lectures and small clinical groups exposing to all kinds of patients with surgical problems.

Arif Memorial Teaching Hospital & Hameed Latif Hospital are attached to Rashid Latif Medical College. In both these hospitals, the surgical department provides all types of general and specialized surgical services to patients who seek consultation for their surgical problems. All types of elective & emergency surgical procedures including Laparoscopic procedures are done regularly.



DEPARTMENT OF **Obstetrics & Gynaecology**

The Department of Obstetrics & Gynecology has a very Distinguished and Highly skilled faculty.

It comprises of 2 units headed by Prof Sohail Khurshid Lodhi (Unit I), Prof Yousaf Latif Khan and Prof Asma Yasin (Unit II) at Arif Memorial Teaching Hospital.

Obstetrics & Gynecology is predominantly taught in fourth and the final years. The education is based on the traditional curriculum. Departmental teaching strategies include daily OSPE, lectures (on campus and online), bed side teaching, small group discussions, OT exposure, evening classes, maternity duties and LMS system (Google class room).

Our graduates achieve a result of 95% or more in the UHS final professional M.B.B.S. examination of Obst. and Gynae each year.

The department is recognized by the CPSP for postgraduate trainees and most of our FCPS Post Graduate Trainees have done with their post graduate degrees and many are under training for our worthy supervisors

We have 7 research publications from Gynae department over last 3 years.

The Department of Obstetrics Gynecology is fully equipped and has facilities to manage all kind s of emergencies an elective cases. It provide services to a vast population in Lahore and the adjoining districts of Kasur and Okara and there by contributing to the reduction in maternal mortality.

The departmental sub-specialties include Gynecological

Endoscopy, Fetal Medicine and Infertility & Reproductive Endocrinology where state of the art services are provided.



We should believe in dreaming Big. In dreams we plant the seeds of our future. By the grace of Allah Almighty and with the support of our beloved parents and devoted teachers all our dreams can come true. Joining RLMC was a choice and RLMC proved my choice the best. RLMC dedicated teachers inspired and motivated me. RLMC teaching methodology is quite effective. Thank you RLMC for making an huge impact on my life.



FACULTY

Prof. Sohail Khurshid Lodhi

Professor
MBBS, MCPS, FCPS

Dr. Samar Hussain

Assistant Professor
MBBS, FCPS

Prof. Asma Yasin

Professor
MBBS, FCPS

Dr. Ayesha Azhar Khan

Assistant Professor
MBBS, FCPS

Dr. Madiha Afzal

Associate Professor
MBBS, FCPS

Dr. Asma Amin Baig

Assistant Professor
MBBS, FCPS

Dr. Uzma Aziz

Associate Professor
MBBS, FCPS

Dr. Asima Munawar

Senior Registrar
MBBS, FCPS

Dr. Rabia Bashir

Assistant Professor
MBBS, FCPS

Dr. Awais Khalid

Senior Registrar
MBBS, FCPS



Performed
9000
Free Cleft
Palate Surgeries



DEPARTMENT OF PAEDIATRICS

This department deals with individuals having congenital malformations and acquired diseases. Nearly **2000** paediatric surgeries were performed over the last one year. ”

Prof. Afzal Sheikh
Head of Paeds Surgery Dept.

Children are the future asset and hope of any nation, hence investment on child health always pays the dividends. Subject of Pediatrics has made great progress over the past few years with the development of Pediatric subspecialties. Department of Pediatrics Rashid Latif Medical College and Arif Memorial Teaching Hospital has made progress since the inception of this hospital. This is a 60 bedded facility with a very experienced and renowned facility. This department comprises of neonatal unit with neonatal intensive care services, pediatric emergency, general pediatric services and busy outdoor clinics. Immunization services and outreach community programs are an integral part of this department.

The department is recognized by College of Physicians and Surgeons Pakistan for MCPS and FCPS training. With the current situation of increasing demand for training slots for postgraduate students, this department has established itself as a reputable centre for postgraduate studies. Research in the field of child health is also one of the foremost priorities of this department. We hope to achieve the status of centre of excellence in pediatric care and teaching and training activities.

FACULTY

Prof. Tahir Masood Ahmad

Principal
Professor
MBBS, FCPS

Dr. Muhammad Anwar

Associate Professor
MBBS, DCH, MRCPCH

Dr. Mehwish Asghar

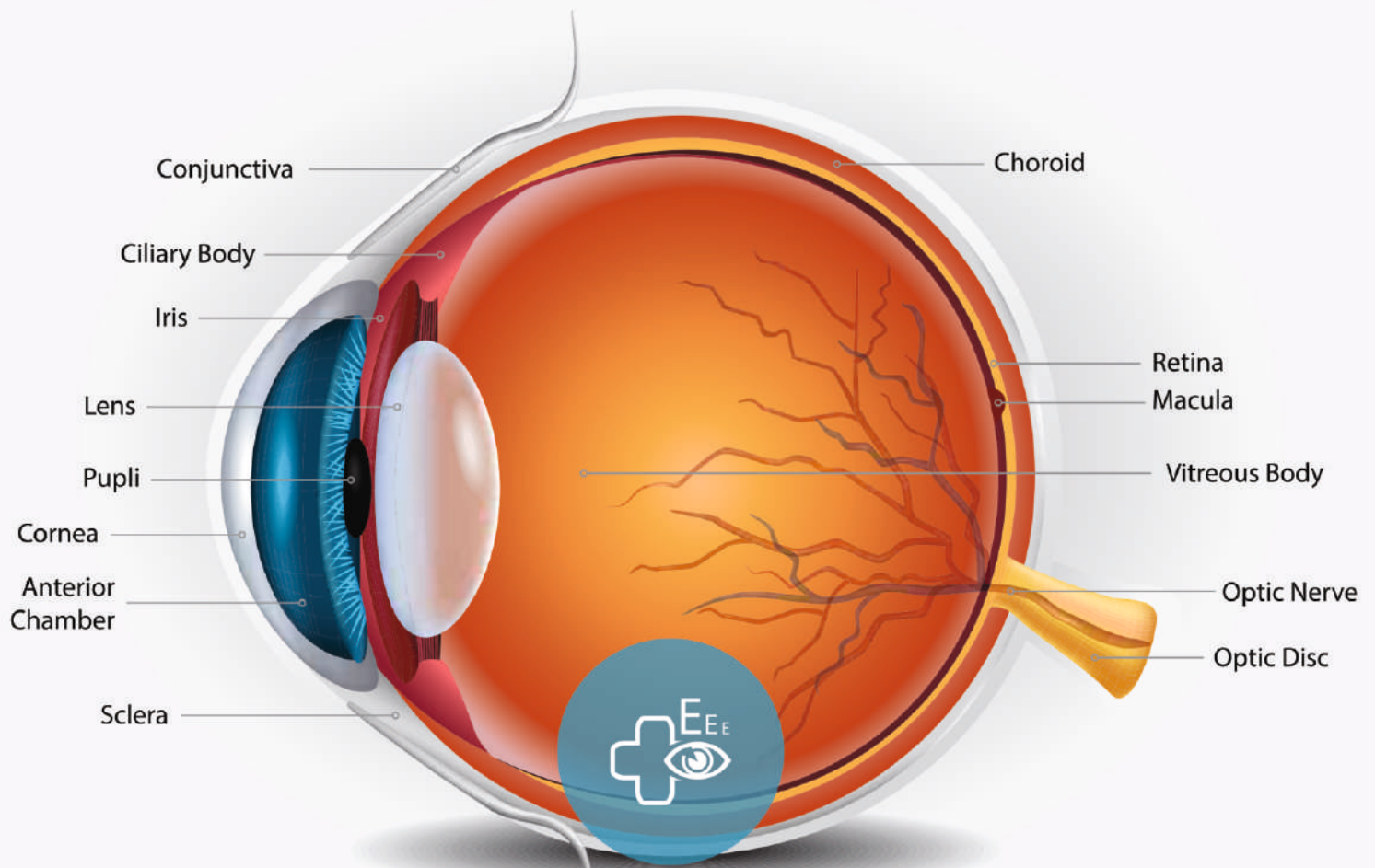
Assistant Professor
MBBS, FCPS

Dr. Sehar Zahid

Assistant Professor
MBBS, FCPS

Dr. Hafiz Muhammad Wasim

Senior Registrar
MBBS, FCPS



DEPARTMENT OF OPHTHALMOLOGY

The high prevalence of eye ailments make Ophthalmology an important specialty.

The department in Arif Memorial Hospital is adequately equipped to cope with the needs of the community. It is headed by an experienced and accomplished specialist who is dedicated to make it a centre of excellence.

Rashid Latif Medical college has always provided a platform for individuals and groups to showcase their extra curricular activities. Every year we arrange an annual Dinner in which all the students have an equal chance of showcasing their talents in singing, dancing and acting. College provides a superb environment to enhance our skills.

Umar Iqbal Javaid Chaudhry
President Dramatics Society.

FACULTY

Prof. Nasira Inayat

Professor
MBBS, M.S (Ophthalmology)

Dr. Syed Abdullah Mazhar

Associate Professor
MBBS, FCPS

Dr. Khalid Rafique

Assistant Professor
MBBS, FCPS

FACULTY

Prof. Shahid Imran Ali

Professor
MBBS, FCPS

Dr. Muniba Javed

Senior Registrar
MBBS, FCPS

Dr. Wardah Zia

Senior Registrar
MBBS, FCPS



DEPARTMENT OF OTORHINOLARYNGOLOGY E.N.T

Headed by experienced and senior faculty member, the department of ENT at Arif Memorial Teaching Hospital is well-equipped to cater to the teaching needs of medical students and provide clinical services to the patients.

The subject of Otorhinolaryngology is taught in third and fourth year of MBBS. The teaching methodology employs Interactive lecture, Small group discussions, Bedside teaching and Clinicopathological conferences. There is a rich Case Mix of patients available in Arif Memorial Teaching Hospital, providing students an ample opportunity to learn about a variety of ENT diseases.

The department provides Outdoor and Indoor services to the ENT patients. The ENT unit has a twenty bedded indoor ward, a six day outdoor facility and well equipped ENT operation theatre. The department is adequately equipped to cover the community needs.

The department is in process for recognition by CPSP.



DEPARTMENT OF ORTHOPAEDICS



FACULTY

Prof. Khalid Hussain Khan

Professor
MBBS, M.S. (Ortho)

Dr. Aqeel Moazzam

Assistant Professor
M.D., M.S. (Orthopaedics)

Orthopaedic problems can be a source of great misery for a patient. Due to lack of awareness and access, significant number of patients especially in the rural areas are mismanaged by quacks. The Orthopaedic department in this hospital aims to fill the gap of much needed services for the population in the surrounding areas.

FACULTY

Dr. Umar Iqbal

Professor
MBBS, FCPS

Dr. Imran Masood Butt

Assistant Professor
MBBS, MCPS

Dr. Tariq Saeed

Assistant Professor
MBBS, FCPS



DEPARTMENT OF ANAESTHESIA



The high prevalence of eye ailments make Ophthalmology an important specialty.

The department in Arif Memorial Hospital is adequately equipped to cope with the needs of the community. It is headed by an experienced and accomplished specialist who is dedicated to make it a centre of excellence.

To me RLMC is a place of safe learning environment, where zeal and zest for achieving various milestones in professional life is always encouraged. Highly qualified and experienced faculty members have always been there to shape us into learned young professionals. In a nutshell, this place is where I belong.

Fatima Noor
3rd year MBBS GR



DEPARTMENT OF PSYCHIATRY & BEHAVIOURAL SCIENCE



The specialty of Psychiatry is getting wider recognition for its role in the society's well being.

The added dimension of Behavioural Sciences, especially for medical students has further enhanced its importance in a medical college.

Besides patients management this department will be playing a significant role in shaping up tomorrow's doctors.

FACULTY

Dr. Usman Hotiana

Assistant Professor
MBBS, FCPS

Dr. Unaiza Jawad

Assistant Professor
MBBS, M.Phil

Dr. Riffat Idris

Senior Registrar
MBBS, FCPS



DEPARTMENT OF RADIOLOGY

FACULTY

**Dr. Prof. Khawaja
Khurshid Ahmad**

Professor
MBBS, FCPS

Dr. Attka Maryam

Assistant Professor
MBBS, FCPS

Dr. Nayab Asif

Senior Registrar
MBBS, FCPS

Radiology, better known as diagnostic imaging is a branch of medicine that deals with imaging of internal body structures using various modalities. This helps in screening, diagnosis, treatment and follow up of multiple diseases. From simple x-rays to more complex imaging modalities, Radiology occupies a vital role in disease management. Moreover, advancement in interventional Radiology makes it even more vital by allowing image guided biopsies and procedures. Its true to say "Radiology Saves Lives". Radiology department at Rashid Latif Medical College is equipped to provide services to a vast population. The department provides the facilities of x-rays, contrast procedures, portable x-rays, ultrasound and color doppler scan. The hospital is visionary and optimistic in acquiring multislice CT scan in its upcoming development program. Due to its utmost significance in clinical diagnosis and management, Radiology is taught to MBBS students right from the first year. The component of "Radiological Anatomy" is incorporated in the first two foundation years. From 3rd year onwards radiology is taught in clinical rotations. In final year MBBS Radiology is taught with medical and surgical co relation. In addition to MBBS Radiology is also taught to Bsc Hons Medical Imaging Technology (MIT).



SKILLS LAB



When I first decided to opt for a medical degree I was really concerned about my co curricular activities, but thankfully in RLMC they are managed very well with tough routine of studies. Opportunities like sports fest, music gala, trips, annual dinners and much more have made my time here worth staying for!



Ahmed Shahzad
3rd year MBBS CR

Fully equipped state of art clinical skills lab has been established. The Skills Laboratory offers students the opportunity to acquire clinical skills which will play an essential role in their ability to effectively treat future patients.

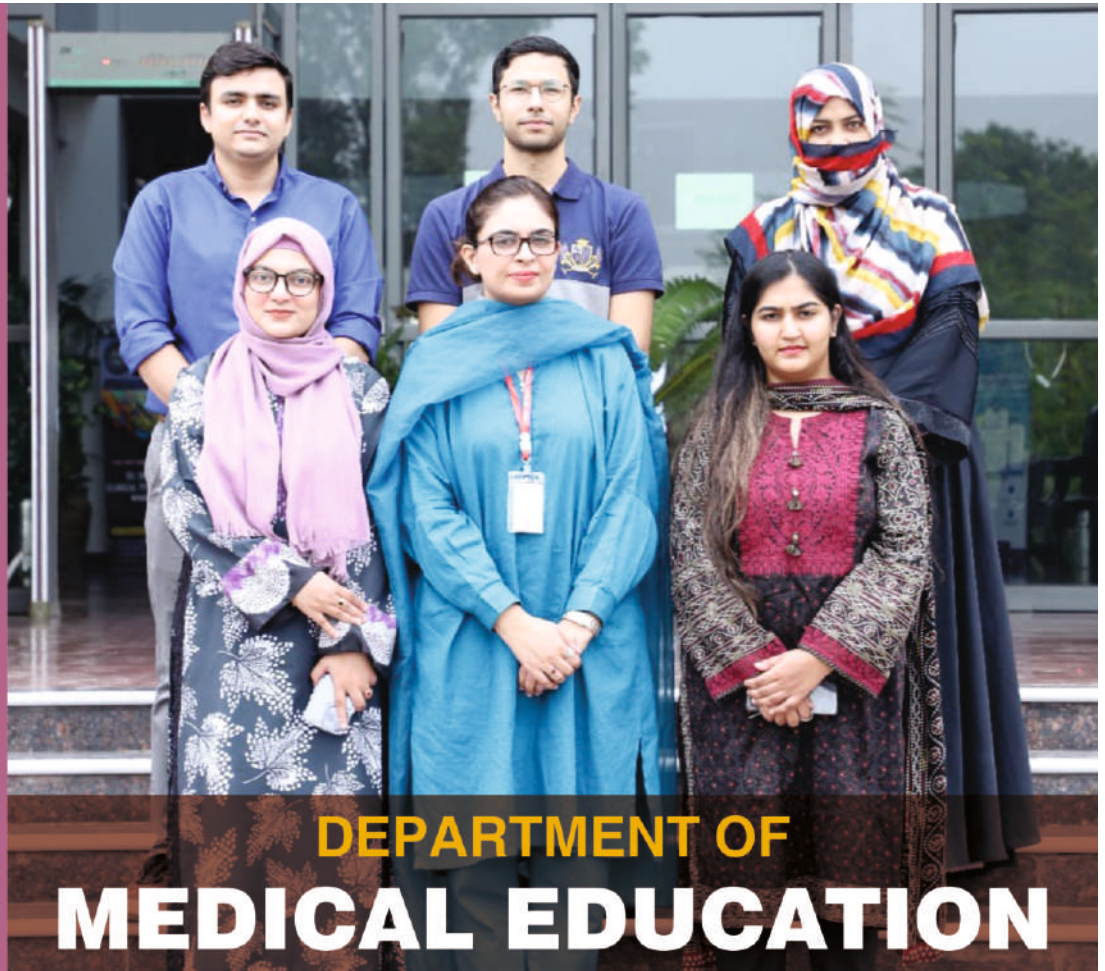
The Skills Lab is equipped with a wide array of resources in order to provide a high standard of training. Cardiopulmonary Resuscitation (adults and children), pelvic, breast and head mannequins constitute but a few of the many teaching tools. Dummy arms, backs and baby heads are used to teach skills such as phlebotomy, inserting intravenous drips, executing a lumbar puncture and inserting sutures.

The Lab provides a safe learning environment where the students can improve their diagnostic, treatment and communication skills.

We offer house

JOB

to all our graduates



DEPARTMENT OF MEDICAL EDUCATION

Medical Education Department in any Medical College/ School serves as skeleton on which intellectual, professional and educational foundation of institute as well as students is laid. Department of Medical Education, Rashid Latif Medical College endeavors for excellence in educational standards among students among students as well as medical teachers. Emergence of Medical Education has glorified the essence of teaching and learning at medical schools in current era. We endeavor to generate Entrustable professionals with passion of researcher, empathy and leadership in true sense.

Objectives of department:

1. CPD (continuous professional development)
2. CME (continuous medical education)
3. Faculty development
4. Quality enhancement
5. Inculcation of non-cognitive skills among medical students and health care professional
6. Quality enhancement of undergraduate and postgraduate programs

FACULTY

Dr. Kainat Javed

Director Medical Education

Dr. Sadia Yaseen

Assistant Professor
MBBS, M. Phil, MHPE, CRMW

Dr. Fatima Sikander

Assistant Professor
BDS, MME

Dr. Ayesha Butt

Demonstrator
MBBS



Biochemistry



Community Medicine



Ophthalmology



Radiology



Physiology



Medicine



Forensic Medicine



Pediatric



Pharmacology



Behavior Science



Anatomy



Pathology



Gynaecology



ENT



RLMC UNITED STATES ELECTIVES PROGRAM

Rashid Latif Medical college one of the institutions after Aga Khan Medical college who sponsors 3rd year, 4th year and final year MBBS students for medical electives in the united states at our partner hospitals AMITA St. Francis Hospital & Swedish Hospital A part of NorthShore in Chicago.

This program was established by Dr Sabahat(the chief in patron), Dr Aftab Mohsin(President of Program), Dr Abul Fazal Ali Khan(Director of Program) and Dr Abdullah Bin Zubair(Founder of Program).

Clinical electives are provided in two periods from March till May and August till October, each student is provided with convenient residence abroad with more than 40 students enrolled in this program for the year 2021-2022. Two of the doctors Dr. Vishnu Giaha in Interventional cardiology, Dr Ana Gavrilovici in family medicine are one of the best in there fields.

The institute prefers students who have dream for USMLE to apper in there exam during thye 4th year of MBBS and has established contracts with UWORLD & AMBOSS so that students could take advantage of the opportunity if required.

Rashid latif medical college has intention to establish a Rashid Latif Khan House in Chicago in the coming years with the help of Dr. Abdullah Bin Zubair of the batch2021.

Where all students of RLMC will be provided guidance in there dream residency program in the US.



COUNSELLING & WELNESS CENTRE (CWC)



Prof. Dr. Nashi Khan
Chartered Clinical Psychologist
Director CWC

RASHID LATIF MEDICAL COMPLEX (RLMC)



RLMC: Counseling and Wellness Center

“Counseling & Wellness Center” Works to provide Inclusive, Individualized, Collaborative Care and Support to all the Students of Rashid Latif Medical Complex.

Mission Statement

“Providing the Entire RLMC Student Community with the Psychological Skills to deal with their Educational, Familial, Emotional and Psychological Issues” Counseling and Wellness Center is an appreciated initiative of RLMC, CEO, Ms. Sabahat Khan that is an Ultimate Product of Untiring passion and Enthusiasm of Prof. Dr. Nashi Khan who is also Project Director, Rashid Latif Khan University (RLKU, Proposed), and it launched first time “Online Students Counseling Services” on 1st of September, 2020 at the start of COVID -19 and since then, it is working efficiently for the Personal, Social and Academic Development for all RLMC Students.

On Campus Counseling Services were direly demanded by the RLMC Students for Face-to-Face Sessions but it was not possible during Covid Restrictions. Alhamadolila, we have started our Face-to-Face Counseling Sessions in RLMC Campus since July, 2021

RLMC Student Counselor, is a fully Certified & Trained Consultant Clinical Psychologist is available for Students in the College and hostel as well and look forward to work closely with Students and the Organization in overcoming the barriers that can prevent student from giving their best.

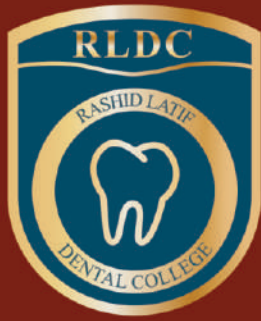
“CWC” addresses all Counseling Needs and ensure that RLMC Students’ needs are met through Latest, Innovative and Collaborative Counseling & Therapeutic Approaches. The mission of “CWC” is to connect Students with Resources and Solutions during times of need so they can all Live, Learn, Work and learn to be Resilient for all Stresses and all their Potentials explored too. Our resources are devoted to address and eliminate Racial, Social, Economic, and Health Disparities in our Student Community.



Ms. Mahrukh Mumtaz
RLMC, Student Counselor
Clinical Psychologist

Appointment Protocol

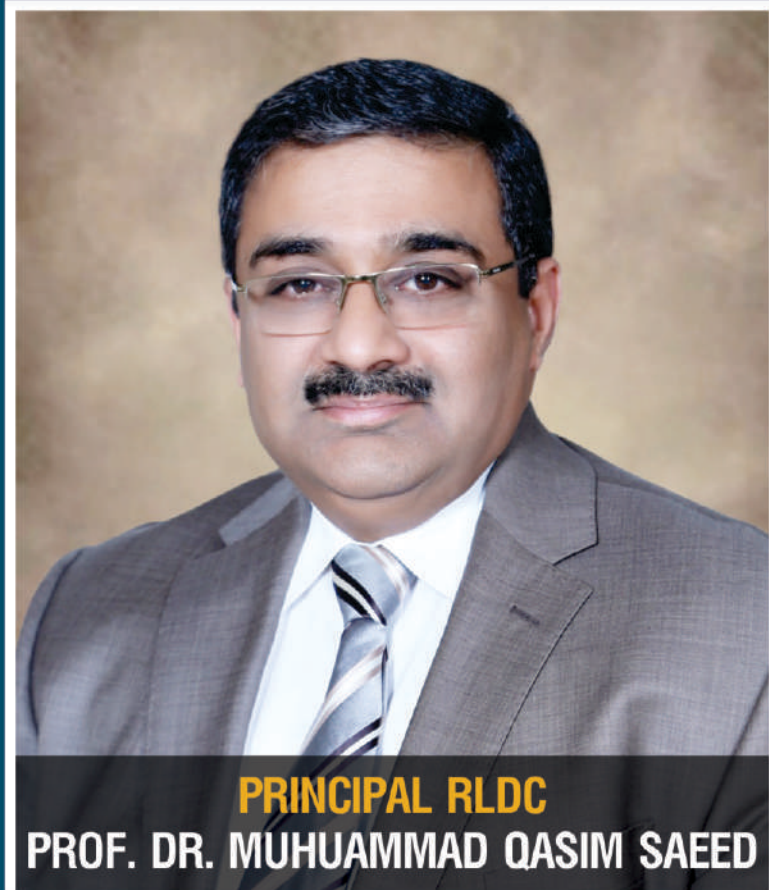
- For Online Consultation Students can get themselves registered by Google Form <https://forms.gle/3xy7YpYiEcfuzXUx7> or by sending Email at counseling.wellness@rlmc.edu.pk
- Face to Face Sessions: Timings in RLMC are 8:00am-3:30pm from Monday-Friday.
- (Office: 1st Floor). RLMC Students can walk in and get them registered for Counseling.
- No Session Fee for RLMC Students.
- RLMC Students are helped in times of extreme distress off Office Hours and in Hostel for Crises Management.



BDS

4 years Degree Program

Bachelor of Dentistry



On behalf of the entire faculty and staff, I am thrilled to welcome you to our esteemed Institute! Today marks the beginning of an exciting journey filled with opportunities, challenges, and personal growth.

At the Rashid Latif Dental College our purpose is to be a career accelerator for our students and an engine of growth for our community, our nation, and the world. This means, first and foremost, that we are student-centered in all we do.

We are building a school that attracts the best and brightest students, creating a rigorous and collaborative student experience, and engaging the entire Rashid Latif Medical Complex community of faculty, staff, and friends, to establish a brand of excellence.

We select each new entering class with the intent of ensuring that we will train tomorrow's leaders in Dentistry, secure in the knowledge that they will be well prepared to practice their chosen specialties and to meet the needs of the public.

Finally, prayers go to ALLAH, the Most Merciful and the Most Benevolent to help us in all the endeavours towards realizing our goals.

The Faculty of Dentistry offers a unique programme which enables you to start practicing the Dental course a year ahead than any other Dental programme in Pakistan.

Not only will you develop clinical skills across the full range of dental disciplines, but you will also build the foundation of scientific knowledge on which clinical practice is based.

In addition, you will appreciate the ethical and legal basis for dental practice, and acquire appropriate skills for communicating with your patients and helping them deal with what many find an anxious experience. The dentist also works as part of the dental team and you will learn about the roles and responsibilities of all members of this team and work with them in the care of your patients.



DEPARTMENT OF DENTISTRY

Dr. Hazik Bin Shahzad

Assistant Professor
BDS, M.Sc

Dr. Khalid Hussain

Associate Professor
BDS, MCPS

Dr. Sana Tahir

Demonstrator
BDS

Dr. Zainab Mehtab

Demonstrator
BDS

Dr. Khizer Ali Khan

Demonstrator
BDS

Dr. Hina Khalid

Assistant Professor
BDS, M.Phil

Dr. Saadia Omar

Assistant Professor
BDS

Dr. Nadia Irshad

Assistant Professor
BDS, M.Phil

Dr. Kaynat Dhillon

Demonstrator
BDS

Dr. Hina Ali

Demonstrator
BDS

Dr. Samman Hassan

Demonstrator
BDS

Dr. Sadaf Yousaf

Associate Professor
MBBS, FCPS

Dr. Zain Ul Abdeen

Junior Registrar
MBBS

Prof. Ahsan Khan

Professor
MBBS, FRCS

Dr. Kinza Khawar

Junior Registrar
MBBS

Prof. Hanna Abdul Majeed

Professor
BDS, FCPS

Dr. Mahrugh Anwar

Assistant Professor
BDS, FCPS

Dr. Kausar Mahmood

Assistant Professor
BDS, MCPS

Dr. Ans Farooq Bamber

Demonstrator
BDS

Dr. Hira Anjum

Demonstrator
BDS

Dr. Qurat ul Ain Manzoor

Demonstrator
BDS

Dr. Yusra Jamil

Assistant Professor
BDS, M.Phil

Dr. Sadia Hassan Khan

Assistant Professor
BDS, FCPS Operative Dintistry

Dr. Sakina Amjad Khurshid

Demonstrator
BDS

Dr. Anum Abid

Demonstrator
BDS

Dr. Shahreen Arif

Demonstrator
BDS

FACULTY

Prof. Fatima Qaiser

Professor
MBBS, M.Phil

Dr. Hira Aamir

Demonstrator
BDS

Dr. Muhammad Naeem Naseer

Demonstrator
BDS

Dr. Sana Sarmad

Associate Professor
MBBS, M.Phil

Dr. Mehvesh Rehan

Demonstrator
BDS

Dr. Faraha Tariq

Demonstrator
BDS

Dr. Faiza Awais Qureshi

Assistant Professor
MBBS, M.Phil

Dr. Muhammad Annas Aslam

Assistant Professor
BDS, Msc (Oral Medicine)

Dr. Zain Akram

Assistant Professor
BDS, Msc (Oral Medicine)

Dr. Taabir Ehsan

Demonstrator
BDS

Dr. Mahnoor Ejaz

Demonstrator
BDS

Dr. Khadeeja Saleem

Demonstrator
BDS

Prof. Farhat Kazmi

Professor
BDS, M.Phil

Dr. Asifa Iqbal

Assistant Professor
BDS, M.Phil

Dr. Shahrayne Rashid

Demonstrator
BDS

Dr. Muhammad Nabeel Akram

Demonstrator
BDS

Dr. Alizay Bhatti

Demonstrator
BDS

Dr. Sadia Manzar

Assistant Professor
BDS, FCPS

Prof. Asad Abbas Malik

Professor
BDS, MCPS, FCPS

Dr. Hafiz Shaker Mahmood

Associate Professor
"MCPS, BDS, Master of Dental Surgery"

Dr. Zeeshan Aslam Jan

Assistant Professor
(oral & maxxilo-facial surgery)"

Dr. Muhammad Minam Qureshi

Demonstrator
"BDS, FCPS"

Dr. Farwa Rubab

Demonstrator
(oral & maxxilo-facial surgery)"

Dr. Muhammad Shahroz Ali

Demonstrator
BDS

Dr. Shabbir Hussain

Assistant Professor
BDS

Dr. Isham Jawaid

Senior Registrar
BDS

Dr. Muhammad Burhan Hayat

Senior Registrar
BDS, MDS

Dr. Dalia Iftikhar

Demonstrator
BDS, Morth RCS

Dr. Sadaf Shaheen

Demonstrator
BDS, FCPS

Dr. Mamoona Sumair

Demonstrator
BDS

Dr. Sahar Mudassar

Associate Professor
BDS

Dr. Saad Shahid

Demonstrator
BDS, MCPS

Dr. Sama Khaliq

Demonstrator
MBBS, M.Phil

Dr. Anas Imran Arshad

Assistant Professor
BDS

Dr. Manahil Maqbool

Assistant Professor
BDS

Dr. Muaaz Amjad

Demonstrator
BDS, M.SC

Dr. Muhamad Raahem Khan Barki

Demonstrator
BDS, Msc Dintistry

Dr. Aqeela Rafique

Demonstrator
BDS

Dr. Moez Ansari

Assistant Professor
BDS

Dr. Afsheen Tabassum

Associate Professor
BDS

Dr. Amina Omer

Demonstrator
BDS, M.SC

Dr. Tehreem Fayyaz

Demonstrator
BDS, Ph.D (Medical Science)

Dr. Zia ud din

Demonstrator
BDS

Dr. Rao Salman Aziz

Associate Professor
BDS

Dr. Kanza Latif

Demonstrator
BDS

Dr. Shehr Bano Ali

Demonstrator
MBBS, M.Phil

Dr. Faheem Mehmood

Associate Professor
BDS

Dr. Maryam Raza

Demonstrator
BDS

Dr. Ayesha Akram

Demonstrator
MBBS, M.Phil

Prof. Asif Ali Shah (Principal)

Professor
BDS

Dr. Wasif Ali Khan

Associate Professor
BDS

Dr. Ayesha Bashir

Senior Registrar
BDS, M.Sc., MDS

Dr. Sumaira Anwar Khan

Assistant Professor
BDS, M.Sc

Dr. Ahsan Khalid

Demonstrator
BDS

Dr. Sara Farzand Ali

Demonstrator
BDS, FCPS

Dr. Asma Rehman Khan

Demonstrator
BDS

Dr. Fatima Sakinder

Demonstrator
BDS

Dr. Muhammad Saad Iftikhar

Demonstrator
BDS

Eligibility Criteria for Admission



ADMISSION PROCESS & POLICY

According to the approval of the Government of the Punjab/ Provincial Cabinet and PM&DC Admissions Regulations 2023, the Admission Policy for admissions to the MBBS/BDS Courses for the academic session 2024-25 in private sector Medical and Dental Colleges in Punjab is notified hereunder (NO.SO(ME-II)2-1/2024):

1. University of Health Sciences (UHS), Lahore, "Admitting University", shall conduct admissions to MBBS/ BDS courses of public and private sector Medical and Dental Institutions/ Colleges in Punjab for the Session 2024-2025.
2. The merit determination formula for the Session 2024-2025 shall be as under:

MDCAT	50% weightage
F.Sc (Pre-Medical)/HSSC/Equivalent	40% weightage
Matriculation/SSC/Equivalent	10% weightage

3. The pass percentage and validity period of MDCAT shall be as under:

Examination	Course	Pass%	Validity Period
MDCAT	MBBS	55	Three years from the date of conduct of MDCAT
	BDS	50	

4. The eligibility criteria for admissions shall be:

- a. has passed the MDCAT Examination;
- b. has obtained a Higher Secondary School Certificate (HSSC) qualification or an equivalent 12th-grade qualification recognized in Pakistan (IBCC Equivalence Certificate is mandatory in that case) and having obtained minimum 60% marks therein; and
- c. has passed the subjects of Biology and Chemistry and either Physics or Mathematics in the Higher Secondary School Certificate Examination or an equivalent 12th-grade qualification recognized in Pakistan.
*Provided that the mandatory requirement of MDCAT shall not apply to the candidates admitted on special program seat pre-defined exclusively for foreign students and on the seats reserved for Overseas (being a Pakistani citizen permanently resident in foreign country) Pakistanis, who have studied and passed HSSC 12 grade examination or equivalent from outside Pakistan. Such students shall qualify for SAT-II with a minimum score of 550 in each subject or a foreign MCAT examination or UCAT examination with 50% marks in each subject prescribed as stated supra in 4(C).



For further information

Inter Board Committee of
Chairmen at FBISE Building
H-8/4, Islamabad-PAKISTAN.

Tel: 051-9250452

Fax: 051-9250454

Email: ibccpk@hotmail.com

Website: www.ibcc.edu.pk

RLMC
Entry Test/
Interview

The candidates who
fulfill the minimum
academic requirements
for admission are short
listed for Institutional
Entry Test / Interview.

Rules Governing Payment of Fee

Fee once paid are only refundable as per PMC policy for MBBS, BDS Student and for other disciplines fee refund as per college fee refund policy.

Any refund of hostel fee as per college hostel refund policy.

Applicants should seek clarification about fees / other dues from Admission Office before applying.

Fees and other charges are payable in advance before the start of academic session.

The academic session at RLMC and RLDC is deemed to start from 1st of September every year.

Students defaulting in fee payment may be suspended and/or barred from the classes and examination until the clearance of dues in accordance with the College policies and procedures.

Students will not be allowed to appear in any university examination unless all outstanding dues are fully cleared prior to the registration deadline of the examination.

Any further additional charges levied by the Government, the University of Health Sciences or the PMC during the course of studies will be charged from the student.

College can utilize refundable security if any, for its operations

Important Rules & Regulations (Examinations)

RLMC is affiliated with University of Health Sciences, Lahore. All the examination rules & regulations stipulated by UHS are applicable to the students of RLMC.

Subjects to be Examined

**First
Professional
(at the end of
1st year)**

- *Anatomy*
- *Physiology*
- *Biochemistry*

**Second
Professional
(at the end of
2nd year)**

- *Anatomy*
- *Physiology*
- *Biochemistry*
- *Pakistan Studies*
- *Islamic Studies*

**Third
Professional
(at the end of
3rd year)**

- *General Pathology, Bacteriology and Parasitology*
- *Basic Pharmacology and Therapeutics*
- *Forensic Medicine and Toxicology*
- *Behavioural Sciences including Communication*
- *Skills and Research Methodology*

**Forth
Professional
(at the end of
4th year)**

- *Special Pathology including Haematology and Clinical Chemistry*
- *Community and Preventive Medicine*
- *Ophthalmology*
- *E.N.T.*

**Final
Professional
(at the end of
final year)**

- *Medicine & Allied Specialties*
- *Surgery & Allied Specialties*
- *Obstetrics & Gynaecology*
- *Paediatrics*

According to PMDC Notification (No. 29-Notification/Council-2013/252753), dated 16th July, 2013.

Pass marks for professional examinations are 50%, separately in theory and practical of each subject. In the clinical subjects, 50% of marks for clinical part separately are essential to pass in practical. A student shall be declared successful only if he/she passes in all components of examination (i.e., theory/ practical/ clinical) at the same time.

Before appearing in the University Examination, the students will be required to produce 'No Dues Certificate' from the contractor of College and Hostel Tuck Shops, College Cashier, College Librarian and Hostel Warden. Students who are unable to produce the same are liable to be detained by the head of the institution from appearing in the university professional examination. No student shall be allowed to appear in any university examination unless he/she has attended at least 75% of the lectures, demonstrations, tutorials and the practical or clinical assignments.

In case the student fails in the Professional Examination in annual as well as supplementary examination their provisional promotion to the next higher class shall stand automatically cancelled and they shall revert to the previous class and the academic credits earned during his/her provisional promotion shall also stand cancelled.

If a student appears in the supplementary examination for the first time as he/she did not appear in the annual examination and fails in any subject in the supplementary examination, he/she will be detained in the same class and will not be promoted to the next class. Promotion on CARRY ON basis will not be allowed under any circumstances.

The students will have to pay fee for the detained year according to the number of subjects in which the student has to reappear.

The head of institution reserves the right to detain any student from appearing in the Professional Examination of the University at any stage, if in his/her opinion, the student is found to be short of attendance in theory or practicals of any subject or the student's work is reported to be unsatisfactory by any professor, lecturer or if in the opinion of the head of the institution the character and conduct of the student is unsatisfactory.

Award of Grace Marks or any such increase in marks by any other manner is not permissible under any circumstances. University of Health Sciences has introduced Objectively Structured Performance Evaluation (OSPE) in its affiliated institutions to eliminate bias, favoritism and victimization in viva voice, practical and clinical examinations.

There is zero tolerance for use of unfair means in examinations.

Regulation for Internal Assessment

Continuous internal assessment shall consist of evaluation at the end of each assignment, e.g., stages/sub-stages, class tests etc., attitudinal assessment by the faculty, clinical skills assessment by clinical supervisors. Wherever applicable the yearly Log Book will be important reflection of a student's performance.

Term Tests and Send-up assessment are important components of internal assessment.

Assessment of Knowledge, Skills and Attitude shall contribute towards internal assessment. Methods used to assess these domains shall include Multiple Choice Questions of one-best type, Short Essay Questions, Oral Viva, and Practical/Clinical Examinations.

The weightage of internal assessment shall be 10% in all subjects. 5% internal assessment marks shall be added to the aggregate score of Theory and 5% internal assessment marks to aggregate score of Oral and Practical Examination and not to an individual component like MCQs, SEQs Paper or Oral / Practical / Clinical Examination.

The score of internal assessment shall contribute 10% and the university examination of each subject shall contribute 90% to total score. The candidate shall pass in aggregate.

Send Up examinations 4-6 weeks before the annual university examination shall be compulsory for students of all classes. Students who do not appear or fail in the examination will be regarded as students whose courses of instructions are incomplete and unsatisfactory and will not be allowed to appear in the university professional examination for promotion to the next higher class. Pass percentage for Send Up examinations is 50%.

Awards of internal assessment in all the subjects of all the candidates shall be submitted to the Controller of Examinations along with Admission Forms for the professional examination. Internal assessment received after commencement of the final examination shall not be accepted.

The marks of internal assessment shall be submitted only once a year prior to annual examination and the same shall be counted both for annual and supplementary examinations. It is further emphasized that fresh assessment or a revision of assessment for supplementary examination shall not be permissible.

Proper record of continuous internal assessment shall be maintained by respective departments of the medical college. Internal assessment awarded in a particular year may not be decreased subsequently detrimental to the candidate.



رشد داء دواء

Campus
facilities continuously
upgraded
and new facilities
developed

PHARM. D.

5 years Degree Program

Doctor of Pharmacy





Prof. Dr. Humayun Riaz
Principal RLCP



COLLEGE OF PHARMACY

FACULTY

Prof. Dr. Humayun Riaz
Principal
PhD Pharmaceutics

Dr. Hammad Yousaf
Assistant Professor
M. Phil. (Pharmaceutics),
Ph D (Contd)

Dr. Umar Farooq
Assistant Professor
PhD Pharmaceutics

Dr. Rana Khalid Mahmood
Assistant Professor
M. Phil. (Pharmaceutics),
Ph D (Contd)

Dr. Abdul Raheem Malik
Assistant Professor
M. Phil. Pharmacology,
Ph D (Contd)

Dr. Sohail Amjad
Assistant Professor
PhD (Contd)

Dr. Namra Ibrar
Lecturer
M. Phil (Pharmaceutical)

Dr. Shayan Maryam
Lecturer
M. Phil. (Pharmaceutics)

Dr. Kanwal Asif
Lecturer
M.Phil (Pharmacology)

Dr. Syed Ali Faran
Lecturer
M. Phil. Pharmaceutics

The wind of Internationalization and globalization has become the major segment of comparative educational enquiry in all fields including the field of Pharmaceutical education. To respond to this expectations and challenges the Rashid Latif College of Pharmacy visionaries have created the right infrastructure to pursue the need in pharmacy learning.

The mission of Rashid Latif College of Pharmacy is to provide excellent education in a stimulating environment where delivery of superb pharmaceutical care is integrated with nationally and internationally recognized research. In order to achieve our mission we apply innovative and proven educational methods to produce pharmacists who possess the skills and knowledge to serve their patients in an ethical and professional manner. The Rashid Latif College of Pharmacy has a vibrant staff who is known for discipline and dedication to prepare the young talents to be in right place to face expanding and enlarging pharma segment.

Now it is an exciting time to embark upon the study of pharmacy. We appreciate your interest in our educational programs and we look forward for any questions you have concerning pharmacy education at the Rashid Latif College of Pharmacy.

A graduate in pharmacy has a lot of carrier opportunities within country and abroad. A few of those fields comprise of :

- Drug Inspector
- Pharmaceutical Industries
- Research and Development
- Research Officer
- Scientist
- Advance the practice and profession of pharmacy
- Chemical/Drug Technician
- Pharmacist
- Preparing prescription to patients
- Bio-Tech Industries



Mission Statement

- Rashid Latif College of Pharmacy is devoted to excellence in teaching, learning and research in pharmacy education and practices
- The aim is to develop leadership in various disciplines in pharmacy to make an impact nationally in particular and internationally in general

Objective

To produce a highly competent, skilled and well trained Professionals to provide quality health care services to the community.

Why Study in Pharmacy?

- A well rounded career
Pharmacy is an exciting blend of science, health care, direct patient contact, computer technology and business.
- A vital part of the health care system
Pharmacists play a vital role in improving patient care through the medicine and information they provide.
- Excellent earning potential
Pharmacy is one of the most financially rewarding careers.
- Outstanding opportunities
There is an unprecedented demand for pharmacists in a wide variety of occupational settings.
- A trusted profession
Pharmacists are consistently ranked as one of the most highly trusted professionals because of the care and service they provide.

Top Reasons to become a Pharmacist

- I want to help people get well.
- I like to work directly with patients.
- I enjoy a wide variety of career opportunities.
- I want to be an important member of the healthcare team.
- I am excited to be a part of major innovations in drug therapy.
- I want to work with state of the art technology.
- I would like to be a highly respected member of my community.

Career Prospect

- Hospital Pharmacist
- Clinical Pharmacist
- Community Pharmacist
- Retail Pharmacist
- Academia and Research
- Pharmaceutical Industry
- Career in Government Sector
- Members of Multidisciplinary Health Care Teams

FACULTY

Dr. Asma Manzoor

Lecturer
M. Phil. Pharmacognosy
Ph D (Contd)

Dr. Mahreen Siddique

Lecturer
M. Phil. Pharmacology
Ph D (Contd)

Dr. Muhammad Sameer Ashiq

Lecturer
M. Phil (Pharmacology)
Ph D (Contd)

Dr. Fahad Asim

Lecturer
M. Phil (Pharmacology)

Dr. Sidra Raza

Lecturer
M. Phil (Pharmaceutical Chemistry)

Dr. Hafiza Arbab

Lecturer
M. Phil (Pharmaceutical Chemistry)

Mr. Muzzamil Raza

Demonstrator
Pharm. D

VISITING FACULTY

Dr. Petra Sheraz

Sr. Clinical Pharmacist
Pharm. D (USA)

Mr. Sohail Rasheed

Lecturer

Mr. Ussama Saleem

Assistant Professor

Dr. Yasir Mehmood

Associate Professor
Ph.D Pharmaceutics

Prof. Sameen Saqib

Pharmacy professional's demand has highly increased in the current era due to emerging diseases and infection control. This demand is not only constricted to USA and Canada, but now pharmacy profession has achieved popularity in Australia, European, Gulf and Asian countries especially in Pakistan.

- Pharmaceutics
- Pharmaceutical Microbiology
- Pharmaceutical Chemistry (organic & in organic)
- Center of Pharmaceutical Research
- Physiology & Anatomy
- Pharmacology & Therapeutics
- Pharmacy Practice
- Pharmacognosy & Phytochemistry

All departments are fully equipped with advance and latest instruments/ apparatus with air conditioned facility for Pharm-D students.

Why Study at Rashid Latif College of Pharmacy?

Course Duration & Eligibility Criteria

5 years (Full Time Study)
F.Sc (Pre-Medical / A-Level equivalent to 60% of F.Sc) or B.Sc

- Separate Pharmacy College Building equipped with advanced Library and Computer lab
- Highly qualified & well experienced Professional Teaching Faculty
- Fully Air-conditioned & spacious Lecture theaters/ class rooms with multimedia Facilities
- Transport Facilities for Day scholars & Hostel Facilities within College premises
- Economical/ affordable fee structure
- Internships in Retail and Clinical Pharmacy in Hospitals
- Interactive tutorial and practical's with other medical students
- Modern method of teaching by visiting Pharmaceutical industries & Hospital Facilities for Clinical Skill development
- Two teaching hospital for clinical training and practical
 - Hameed Latif Hospital (250 bed hospital)
 - Arif Memorial Teaching Hospital (610 bed purpose built hospital)
- Campus activities, Gym, Indoor/outdoor Sports & cafeteria Facilities
- Career Counseling Services (Pakistan & Abroad) & Regular Students educational performance monitoring
- Scholarships for Students
- Financial assistance (on merit cum need basis)

Rashid Latif College of Pharmacy will focus on;

- Strengthening student's scientific knowledge to understand the ethical and professional responsibilities;
- Providing sufficient professional and practical experience, enabling students to become valuable pharmacists, to serve the nation;
- Improving technical, conceptual and human skills required to continue their education and to lead a successful life.
- Realizing their mental and physical abilities to enrich their theoretical and practical knowledge.
- Students will be trained for Public and Private Pharmacy Jobs and to start their pharmacy Business.
- Job Placement, Job Fair will be arranged for final year students.

Memorandum of understanding with;

Different Pharmaceutical industries | Community Pharmacies | Hospitals

Farwa Tahir
3rd Position
3rd Professional Pharm-D



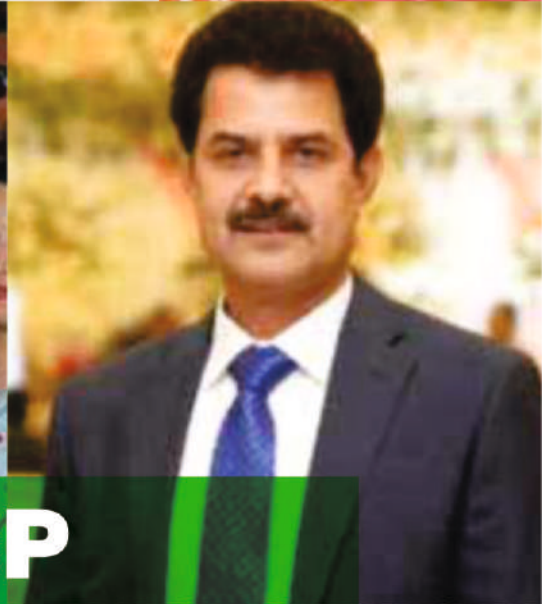
Naba Shabbir
1st Position
4th Professional Pharm-D





LIFE at RLCP





LIFE at RLCP



COLLEGE OF PHYSIOTHERAPY

DOCTOR OF

Physical Therapy

“ I believe that this education should provide global opportunities for our physical therapists to work with the patients of any kind and academia around the world. ”

Dr. Rehana Niazi



Dr. Rehana Niazi
Principal
Rashid Latif College
of Physical Therapy

Objective

Our objective is to have physical therapy graduates of unmatched quality who are highly skilled, caring and cultured professional.

So, it's my utmost volition for you to withhold this profession with the highest of commitment and consistency to make a certain mark and a good name to this institution and country.

To produce a highly competent, skilled and well trained Professionals to provide quality health care services to the community.

Job Opportunities

There is an unprecedented demand for physiotherapy in a wide variety of hospital and clinical settings.

International Professional Standards:

The curriculum of DPT program is based on the international standard of education and guide to physical therapy practice.

Credible Profession

Physiotherapists are consistently ranked as one of the most highly trusted and respected professionals because of the care and services they provide.

An Essential Part of the Health Care System

Doctor of Physical Therapy is not a new profession some sort of physical therapy practice even existed in Europe from 1500s – 1700s. Physical Therapy profession is also not part of the alternative medicine but it is part of modern medical system which is developed by the father of western medicine Hippocrates. In developed world physical therapy education is very advanced up to doctorate level.

With this growth in the number of medical institutions comes a greater responsibility of producing highly skilled, empathetic, ethical and dynamic physical therapists that would compete at a world stage. This modern era of information highways and digital age calls for today's physical therapists to be well versed not just in the science of physical medicine and rehabilitation but also to exhibit a well rounded personality with a sound focus on communication skills, research and development.

Learning how to learn and seeking counsel when needed are two important factors that help determine success for a student. In many instances, attaining a medical degree may be considered the end goal while in my opinion it is just a stepping stone towards serving mankind and leaping beyond one's own capabilities.

We are proud of our faculty which blends wisdom of experience with exuberance of youth. Realizing the importance of continuing medical education and professional development, the faculty is highly qualified and encourages the modern concepts of participatory learning. An important component of our institution is affiliated with University of Health Sciences Lahore and has affiliated with two Post Graduate Teaching Hospitals to provide clinical learning Arif Memorial Teaching Hospital comprised of 800 beds and Hameed Latif Hospital comprised of 400 beds.

Why become a Physical Therapist?

- I want to diagnose and manage physical and functional dysfunction.
- I want to work with State-of-the-Art technology.
- I want to help people get well.
- I like to work directly with patients.
- I enjoy a wide variety of clinical career opportunities.
- I want to be an important member of the healthcare team.
- I would like to be a highly respected member of medical community.

Physical therapy is much more than just dealing with sports-related injuries.

Doctor of Physical Therapy at glance:

Physical Therapy is a branch of rehabilitative medicine aimed at helping patients maintain, recover or improve their physical abilities.

Physical Therapists work with patients whose movements may be impaired due to aging, disease, environmental factors, or sporting hazards, a physical therapist seeks to identify and maximize quality of life and movement potential through prevention, intervention (treatment), promotion, habilitation and rehabilitation.

Physical Therapy is a Clinical Health Sciences

Physical therapy is not alternative therapy. It is a clinical health science. Physical therapists study medical science subjects, including anatomy, neurosciences and physiology in order to acquire the health education needed for prevention, diagnosis, treatment, rehabilitation, etc., of patients with physical problems. The physical therapist works in hospital, GP (general practice, primary care medicine) practices, and the community.

Ifra Zulqarnain
DPT 3rd Year
3rd Position in UHS



Aqsa Butt
DPT 4th Year
3rd Position In UHS



FACULTY

Prof Dr. RehanaNiazi

Principal
BSPT, TDPT, MPhil, MS-OMPT,
PGD(Sports), TPC (AFSM), WHPT

Dr. Sobia Kanwal

Associate Professor
BSPT, TDPT

Dr. Nazeer Ahmad

Assistant Professor
BSPT, PPDPT, MS-NMPT, CMT

Dr. Abbas Jamil

Assistant Professor
BSPT, TDPT

Dr. Umar Hafeez

Assistant Professor
BSPT, TDPT

Dr. RikzaNaseer

Assistant Professor
BSPT, TDPT

Dr. Waqas Mughal

Senior Lecturer
BSPT, TDPT

Dr. MunazaArwa

Senior Lecturer
BSPT, TDPT, MS-OMPT

Dr. Ehtisham-ul-Haq

Senior Lecturer
DPT, MS-OMP

Dr. Hadiqa

Lecturer
DPT

Dr. Soyba

Lecturer
DPT

Dr. Tayba

Senior Clinical Physiotherapist
BSPT, MS-OMPT

Dr. Muhammad Hamza Naeem

Senior Clinical Physiotherapist
DPT, MS (PTN)

Dr. Mehak Saleem

Clinical Physiotherapist
DPT

Dr. Bukhtawar

Clinical Physiotherapist
DPT, MS(PTN)

Dr. Ahmad Jahan Zeb

Clinical Physiotherapist
DPT

Dr. Jabeen Haider

Clinical Physiotherapist
DPT

Dr. Amna Abdul Sattar

Clinical Physiotherapist
DPT

Dr. Asma Asif

Clinical Physiotherapist
DPT

Dr. Rehan Amjad

Clinical Physiotherapist
DPT

Dr. Attah Ullah

Clinical Physiotherapist
DPT

Affiliated with University of Health Sciences



RASHID LATIF INSTITUTE OF ALLIED HEALTH SCIENCES

BSc (Hons) Medical Lab Technology (MLT)

4 years

UHS

BSc (Hons) Medical imaging Technology (MIT)

4 years

UHS

BSc (Hons) Optometry and Orthoptics

4 years

UHS

BSc (Hons) Speech & Language Pathology

4 years

UHS

BSc (Hons) Dental Hygiene

4 years

UHS

BSc (Hons) Dental Technology

4 years

UHS

Diploma in Operation Theater Technology

2 years

PMF

Diploma in Medical Lab Technology

2 years

PMF

Diploma in Dispenser

1 year

PMF



Principal Message

The Mission of Rashid Latif Institute of Allied Health Sciences is to produce competent allied health professionals to meet local, regional and national needs. Rashid Latif Institute of Allied Health Sciences is home to knowledge regarding professional and research in medical Allied Health. The Rashid Latif Institute of Allied Health Sciences is to have a positive impact on students through various degree programs that promote four different disciplines BSc Hon of Medical Lab Technology, Medical Imaging Technology, Speech Language Pathology, and Optometry in Pakistan. All these disciplines increase the number of professionals in health care institutes and introduce new advancements in skills with expertise in the field of Allied Health Sciences. Besides educational and professional trainings, the Department enriches the academic assets and moral values for professionals.

Objective of Allied Health Sciences

- To prepare the graduates of Allied Health Sciences as an individual with broader perspectives of health and health-care and bring innovation critical thinking through lifelong skills of clinical and research into health-care settings.
- To provide academic quality in professional knowledge
- To develop reflective practitioners with effective interpersonal and clinical skills.
- To provide students with a thorough understanding of relevant professional knowledge by applying science and research to clinical practices.
- To provide graduate students with developed proficiency in reasoning and problem solving relative to clinical principles and procedures in diagnosis and treatment especially in Medical lab technologies, Medical imaging Technologies, Optometry and Speech language pathology.

Paramedical programs are also under the umbrella of AHS to meet the national deficiency of professionals



DEPARTMENT OF Medical Laboratory Technology

• MISSION:

Open access and active learning for every student to produce highly competent, skilled and welltrained professionals and provide quality health care services to the community. Medical Laboratory Technology is a profession that combines the challenges of medicine with laboratory science for the confirmation of medical decisions. As part of the healthcare team, Medical Laboratory Technologists perform testing diagnosis and use critical thinking skills to determine the accuracy and validity of test results.

In Academic and Research field as

- Professors / Lecturers
- Academic Administrator
- Research Supervisors
- Research Projects with National and International Health Organizations (WHO)
- Ph.D., M.phil in Various Fields Including Microbiology, Molecular Genetics / Public Health
- Doctor of Medical Laboratory Sciences (DMLS/ MLS)
- National and International Scholarships for Pursuing Higher Education in Relevant Fields

CAREER OPPORTUNITIES

- In Govt. & Private Health sectors as
- Medical lab Technologist/Clinical Pathologists (BPS-17)
- Immunologists / Microbiologist / Haematologist (BPS-17/18)
- Diagnostic Cytologist / Transfusion Scientist (BPS-17/18)
- Clinical Genetics Professionals / Molecular Biologists (BPS-17/18)
- Laboratory Scientists (BPS-17/18)
- Forensic Scientist in Forensic Crime Laboratories (PFSA)
- Investigation Officers at Pharmaceutical Companies
- Quality Assurance Supervisors
- In Industrial Sector
- Personal Medical Laboratory Setup
- Collaboration with Hospitals and Pharmaceutical companies

Job Opportunities

- Medical Laboratory Technologist
- Pathologist
- Microbiologist in Hospital and Academia
- Immunologist in Hospital and Academia
- Haematologist in Hospital and Academia
- Teaching Faculty
- Lab Supervisor Managers
- Infection Control Centers
- Forensic/Crime Labs
- Diagnostic Companies
- Pharmaceutical Companies
- University Laboratories
- Reference or Industrial Laboratories
- Chemical Pathologist
- Advance Researcher in Medical Laboratories

Specialization:

- Doctor of Medical Laboratory Science DMLS
- M.phill and Ph.D in Microbiology
- M.phill and Ph.D in Clinical Chemistry
- M.phill and Ph.D in Molecular Genetics
- M.phill and Ph.D in Molecular Biology
- M.phill and Ph.D in ImmunoHaematology
- M.phill and Ph.D in Forensic Sciences
- M.phill and Ph.D in Public Health
- Post graduate diploma PGD



I am fortunate to get an opportunity to study at Rashid Latif Medical College, Lahore. The Department is fully equipped with highly trained faculty, advanced medical laboratory and provides academically supportive environment. Along with the education, the department has introduced me to a lot of sports and recreational opportunities and encouraged me to take part in all these extracurricular activities. The RLMC community fostered me to explore my potential and led me to take the best directions towards my future goals and personality grooming overall. I'm thankful for the guidance and support I got from the institution and faculty at every step.



Rameesha Nazir
2nd Position
2nd Professional B.Sc. (Hons.)
Medical Laboratory Technology

FACULTY

Ms. Qurrat Ul Ain Malik

Course Coordinator / Lecturer
B.Sc. (H.) MLT, MS
(Microbiology & Immunology)
Ph.D. (Microbiology &
Immunology) Contd.

Dr. Isra Umbreen Mufti

Lecturer
Pharm-D, MS
(Microbiology & Immunology)
Ph.D. (Microbiology &
Immunology) Contd.





B.Sc. (Hons.) Medical Imaging Technology

Medical imaging technologist in radiologic sciences is a skilled radiographer qualified to provide patient service in radiology and interventional procedures. Medical Imaging Technologists organize and operate many imaging equipment's such as X-ray machines, CT Scans, MRIs, Angiography machines, Nuclear Medicine, mammography, PET scan etc. Medical imaging technologists are also capable of assisting in the surgical procedures performed during the examination, assessing the technical quality of the image, and providing basic patient care. The technologist must function as a member of the health care team.

Mission:

This program target is to train the students in basic imaging techniques of X-ray, Ultrasound, Computed Tomography, Magnetic Resonance Imaging, Mammography, Nuclear Medicine, Angiography and General Radiology techniques.

Collaborations:

Department MIT revises its collaborations with various renowned institutes and hospitals annually for fulfilling the requisites of the concerned degree program.

Job Opportunities:

- 1- 17th scale job in Govt. setup
- 2- Lecturer in Govt. setup
- 3- High demands in Foreign Countries
- 4- Independent Clinical setup
- 5- Professional Setting

Future Prospects:

- 1- MSc. in Diagnostic Radiology
- 2- M.Phil in MIT
- 3- PhD. in Diagnostic Radiology
- 4- AMRDS

Activities:

- Clinical rotation in multiple radiology departments of private and government sectors.
- Departments of Radiology in Rashid Latif Medical College
- Workshops
- Seminars
- National and International Conferences

FACULTY

Prof. Dr. Khawaja Khursheed

Assistant Professor
MBBS, PHD, DMRD

DR. Attka Maryum

Assistant Professor
MBBS, FCPS

Miss Uzma Dogar

Assistant Professor
MS Psychology

Miss Ammara Jabeen

Lecturer/ Course Coordinator
BS MIT

Dr. Sadaf Yousaf

Associate Professor
MBBS, FCPS

FACULTY

Dr. Fatima Zahid

B. Sc. (Hons.)
Optometry & Orthoptics, TDO

Danish Ibrahim

B. Sc. (Hons.)
Optometry and Orthoptics

Ghulam Mohammad
1st Position
3rd Professional B.Sc. (Hons.)



Ayesha Ilyas
2nd Position
3rd Professional B.Sc. (Hons.)



M Awais Sikandar
1st Position
Final Professional Year

Muhammad Bilal
3rd Position
Final Professional Year



Danish Ibrahim
2nd Position
Final Professional Year



When I decided to take admission in Optometry, I searched and enquired about several medical institutes in Pakistan. However, after lots of research, obviously RLMC was the institute, where I wanted to take admission. Later on, my academic experience at RLMC proved my decision right. Pretty much everything about RLMC makes it the perfect place to study Optometry. Moreover, I would say, the best feature is comprehensive clinical opportunities and its ability to integrate services and community with the curriculum. Here, I learned Optometry from the most supportive teachers and clinicians and observed diverse patient population. In fact, at RLMC, there is an unwavering commitment to student success. Besides supporting me in achieving academic excellence and clinical skills, it also imbibed various characteristics encompassing professionalism, leadership, creativity, team work, coordination and collaboration into my personality. In my opinion, RLMC is the best institute if someone is planning to do graduation in optometry in Pakistan.

Ghulam Muhammad
Optometry & Orthoptics



FACULTY

Ms. Aayeshah Firdous
Course Coordinator, SLP/Lecturer

Ms. Sadaf Hameed
Lecturer

Ms. Zunaira Zulqarnain
Lecturer

Ms. Saira Munawar
Visiting Lecturer

Ms. Iqra Naseer
Visiting Lecturer

Ayesha Shoaib
1st Position
3rd Professional B.Sc. (Hons.)
Speech & Language Pathology



Javeria Shafiq
2nd Position
3rd Professional B.Sc. (Hons.)
Speech & Language Pathology



Noor-e-Fatima Moazzam
2nd Position
2nd Professional B.Sc. (Hons.)
Speech & Language Pathology



Sara Tahir
2nd Position
2nd Professional B.Sc. (Hons.)
Speech & Language Pathology



TESTIMONIALS

I feel very blessed to be a part of RLMC. The teachers are very helpful in every moment of difficulty, I never felt alone in RLMC just because of my superb teachers. The study level is best, but student should also be concerned about their studies to get successful.

Sara Tahir

After last year's professional exam, much like every year, I was extremely content while walking out of the exam hall courtesy to the guidance and mentorship of our teachers here at RLMC. Despite the challenges we were faced with in the last year due to the closure of on-campus classes; our teachers and faculty at RLMC made sure to make the transition from physical to virtual a smooth and efficient one for us.

Noor-e-Fatima Moazzam

Being student of Rashid Latif Medical College is an amazing experience. My college has provided me with a number of opportunities to grow and explore my skills. The emphasis on sports along with education always helped me a lot. I have always found a positive and healthy environment and the teachers are highly educated, supportive, friendly and humble. I am proud to be a student of this institute because it has added a number of values to my life.

Noor-e-Fatima Moazzam

Rashid Latif Medical College Lahore is an ideal place to study as it provides its students not only theoretical base lesson but also focus on practical trainings by attached teaching Hospitals. This helps us in competing students of other institutes by securing position in UHS. This obviously would not be possible without good faculty which RLMC is luckily having. The best thing about this institute is that it focuses on students professional skills grooming by providing so many extracurricular activities. I always feel myself lucky to be student of this college and making efforts to make my college proud of me too.

Javeria Shafiq



Dental Hygiene

Introduction

A dental hygienist or oral hygienist is a licensed dental professional, registered with a dental association or regulatory body within their country of practice. They have the training and education that focus on and specialize in the prevention and treatment of many oral diseases. The major role of a dental hygienist is to perform periodontal therapy which includes things such as periodontal charting, periodontal debridement (scaling and root planning), prophylaxis (preventing disease) or periodontal maintenance procedures for patients with periodontal disease. The use of therapeutic methods assists their patients in controlling oral disease, while providing tailored treatment plans that emphasize the importance of behavioral changes.

Future Prospects

Graduates of BS honors Dental Hygiene can pursue their post-graduation i.e. MS/PHD in hospital care management, Public health, Advanced Restorative and Periodontal Practice(MSc), Dental Public Health, Dental Hygiene (MSc). MS in public health and hospital care management.

Objectives

Dental Hygiene education and training should enable the student to:

- Develop accuracy and meticulousness to attain high levels of ethics and technical proficiency.
- Assess the technical and non-technical skills in a standardized and reproducible environment.
- Strengthen the decision power and exercise appropriate judgment skills, to be applied especially during crisis.
- Develop good leadership, problem solving and administrative skills.
- Develop and analyze innovative strategies for effective communication with the patients and the healthcare personnel.
- Demonstrate interdisciplinary team building strategies for effective co-ordination between various Allied Health Disciplines.
- Demonstrate understanding of the basic concepts of professional behavior and legal implications of the work environment.
- Demonstrate the knowledge of his / her role in health care delivery system.
- Establish and maintain continuing education as a function of growth and maintenance of professional competence.



Dental Technology

Introduction

The Course is highly innovative and would render expertise and knowledge in the Exposure Control Techniques, Money Management for Dental Laboratories, Complete and Partial Dental Design, Porcelain Laminate Veneers, Face Bow transfers and Articulators of choice, Static and Functional Occlusion & Effective Liaisons & Communication Skills while interacting with Dental Professionals.

Mission

This program is aim at making students experts in various dental appliances including bridges, crowns, dentures, dental braces and orthodontic appliances. Dental technician work to the prescription of the dentist for each patient.

Program Structure

Program Duration: 4 Years

Eligibility Criteria: FSc. (Pre-Medical) with 50% Marks or Equivalent

Program Structure

Program Duration: 4 Years

Eligibility Criteria: FSc.

(Pre-Medical) with 50% Marks
or Equivalent



“ A career in health care requires passion and a dedication to caring for others ”

Prof. Dr. Rizwana Muzaffar
Head of Nutrition Dept.

Department of Nutritional Sciences

Adequate nutritional support is a serious concern for the health and wellbeing of individuals of all ages. To accomplish this goal, Rashid Latif Institute of Allied Health Sciences took the initiative and established the Department of Nutritional Sciences in 2014. Rashid Latif Institute of Allied Health Sciences is offering a four-year bachelor program “B.Sc. (Hons) Nutrition” under the affiliation of the University of Health Sciences Lahore. The department is running the course as developed by university of health sciences and have succeeds in scoring top positions among other institutions. The four-year program aims to produce socially and ethically responsible graduates (Nutritionists) who will contribute to related profession and society as a whole through quality education, research, and service.

Mission:

Mission of Department of Nutrition is to prepare professionals with the proficiency to enhance individual and community health through food and nutrition.

Affiliated Hospitals:

- Hameed Latif Hospital
- Arif Memorial Hospital

Scope of Practice:

Opportunities in Academic Field:

- Lectureship in Government Institutes
- Lectureship in Private Institutes
- Research and Development

Opportunities in Clinical Fields:

Jobs in Government Setups

Nutrition Officers

DHQ/THQ

Private Hospitals

Personal Clinics

Health Organizations:

WHO

UNICEF

Micronutrient Initiative (MI)

Punjab Food Authority

Industry:

Nutraceutical companies

Food production companies

Achievements:

Positions in UHS

Distinctions in UHS

Activities:

Clinical rotations in different hospitals

Nutrition education programs

Nutritional status assessment camps

Workshops

National and International conferences

FACULTY

Prof. Dr. Rizwana Muzaffar

Head of Department
M.Sc. Human Nutrition & Dietetics, Ph.D.
Epidemiology and public Health

Ms. Zoha Sohail

Senior Lecturer/ Course Coordinator
BS (Hons.) Food and Nutrition,
Post graduate diploma in dietetics,
MS clinical nutrition

Ms. Maryam Zahid

BEMS Bachelor of Eastern medicine
and surgery
Mphil Food and Nutrition

Ms. Noohela Khan

Lecturer
BS (Hons.) Nutrition and Dietetics, Mphil.
Food and Nutrition

Ms. Saman Ishtiaq

Clinical Nutritionist
B.Sc (Hons.) Nutrition

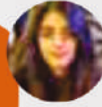
Mahrugh Tariq
1st Position
Final Professional Year



Aimen Moin
1st Position
Third Professional Year



Zaveera Qutb
2nd Position
Final Professional Year



Malja Afzal Khan
2nd Position
Third Professional Year



Shahmeen Javaid
3rd Position
Final Professional Year



Fatima Tariq
3rd Position
Third Professional Year



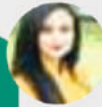
Komal Zakir
3rd Position
Final Professional Year



Mahrugh Tariq
1st Position
Second Professional Year



Rameen Bukht Khan
1st Position
Third Professional Year



Zaveera Qutb
2nd Position
Second Professional Year



Mnahil Moazzam
3rd Position
Second Professional Year





Admission Procedure of Allied Health Sciences

Health care opportunities are not just limited to doctors. In addition to physicians there are allied health professionals, whose job span many areas of health care. The two words “Allied Health” stand for the largest group of health care providers. The Allied Health Professionals are needed globally; they get well paid jobs in Pakistan, Middle East and also in developed countries. They are highly respected, essential and critical to the healthcare delivery system.

Eligibility

For B.Sc. (Hons)

F.Sc. Pre-Medical (with 50% marks in science subjects) or Equivalent Qualification.

For DPT

F.Sc. Pre-Medical (with 60% marks in science subjects) or Equivalent Qualification.

Age between 17 to 25 years

The College admits all categories of students on merit basis. Applicants compete within their category. The tuition fee paid by each category is different.

Final Selection

Selection of students is made on merit. The selection decisions by the institution’s administrations are final and non-negotiable.

Interview

Names of short-listed candidates will be posted on the Institute’s notice board and website. Students should ensure themselves if they have been short-listed and confirm the day, date and time of their interview.

Classification of Student Categories

Local Pakistani Students:

Students born, raised and educated in Pakistan.

Overseas Pakistani Students:

Children of expatriate Pakistani families

Local Pakistani Students:

Carrying foreign passport/Green Card

RASHID LATIF NURSING COLLEGE



Faisal Nadeem
Principal RLNC

BACHELORS OF SCIENCE IN NURSING

Principal's Message

Rashid Latif Nursing College (RLNC) is an integral part of Rashid Latif Medical Complex (RLMC). The autonomous campus is elegantly architecture which is conducive to both teaching and learning. Presently we are offering Bachelor of Science in Nursing (BSN), Certified Nursing Assistant (CNA) and Diploma in nursing programs. The students of RLNC learn their professional skills in the world-class medical facilities provided by Arif Memorial Teaching Hospital and Hameed Latif Hospital. Arif Memorial Teaching Hospital and RLNC are on the same campus so a picture perfect approach to teaching and learning is adopted for nursing students' hospital experience, whereas they also gain experience from different communities of Lahore and Kasur. We have well-qualified and passionate faculty members and clinicians, who teach through evidence based approach to better practice and education.

Please visit RLNC and explore more!

Mission

To provide conducive learning environment to nursing students without any religious, political, ethnic, gender, color and race discrimination. To develop advanced knowledge and critical skills through proven academic programs and Instructional methods.

Vision

To prepare competent and compassionate nurses who are able to provide quality nursing care to patients locally and globally.

Goals

The School of Nursing's Goals are to:

Prepare highly educated and competent nurses ready to enter the workforce. Contribute to and disseminate the scholarly evidence-base in nursing and health care. Foster excellence in teaching. Provide service to the profession and other communities of interest.

Philosophy

The guiding philosophy of BSN Program is based on the College of Nursing values: collaboration, social responsibility, integrity, respect, accountability, diversity, and excellence.

Collaboration

Care of individuals, families and communities occurs within a health care system that provides for consultation, collaborative management, and referral between nurse-physician and other health care providers. This care enhances continuity in the best interests of the women and their families.

Social Responsibility

Social and reproductive justice are essential values of nursing practice. There is a need to develop innovative systems to increase access to health care for all individuals and their families.

Integrity

Nurses respect their own self-worth, dignity, and professional integrity. They provide an environment that promotes privacy and safety for individuals and their families, and protects them from harmful and unethical practices.

Respect

Nurses respect the individuality, dignity, and basic human rights of all persons. They support the self-determination of individuals and their families through a partnership and empowerment. Nurses recognize the normalcy of women's life cycle events, including menarche, preconception, pregnancy, birth, newborn care, postpartum, miscarriage and abortion, well-woman care, and menopause. A central goal of care is to promote, maintain, and restore the well-being and health of women, families, and communities.

Accountability

Nurses maintain a commitment to professionalism through reflective and systematic evaluation of practice and ongoing professional growth.

Diversity

Nurses approach the care of individuals and their families from a position of cultural humility and inquiry and provide care without discrimination or prejudice.

Excellence

Nurses apply the scientific evidence from nursing science, midwifery, and related sciences to the care of individuals and their families. Nurses educated at the graduate level are prepared to safely and competently practice the PNC core competencies. BSN graduates are further prepared with skills in leadership, practice inquiry, and evaluation.

FACULTY



Faisal Nadeem
(Principal & Associate Professor)



Ms. Uzma Azeem
(Nursing Instructor)



Mr. Johnny Gill
(Nursing Instructor)



Mr. Nabeel Anwar
(Nursing Instructor)



Ms. Aina Khan
(Nursing Instructor)



Sidra Bano
(Nursing Instructor)



Ms. Iqra Shoukat
(Nursing Instructor)



Ms. Irfa Fatima
(Admin Officer)



ENTRY TEST/ INTERVIEW

- The entry test will be conducted in Rashid Latif Nursing College for eligible candidate. The time and venue will be communicated to candidates.
- The interview for all required categories will only be valid for the candidates who clear the entry test.
- No candidate will be allowed to appear in the interview without the admit card.

DOCUMENTS REQUIRED For BSN

- Application forms along with following documents must be attached in an office file:
- Matric Certificate/ 'O' levels or equivalent examination certificate
- Marks sheet of Matriculation/transcript O-level or Equivalent examination O-level equivalence certificate (if applicable)
- Intermediate Science/A-level marks sheet transcript
- Inter Science (Provisional/ A-level Equivalence Certificate)
- Candidates Domicile
- Candidates PRC
- Father/ Guardian's Domicile
- Candidate's NADRA National Identity card (CNIC) / B Form
- 10 recent passport size photographs (3 photos with names, attested on the front and 3 attestation on the back.
- Father's/Mother's CNIC
- Pay order of Rs. 2500 to be paid via bank challan available at MCB (RLMC)
- Hard copy of the above documents to be sent on the address given Office of Admissions, RLNC

Note:

- Application forms should be submitted alongwith required documents at RLNC with a Challan of Rs.2500/- in favour of RLNC, as interview and processing fees (non-refundable) to be paid at MCB,RLMC Branch.

STUDENTS' CONDUCT RULES

These rules are applicable to all students who are admitted in RLNC.

1. No outsider will be invited by the student to address any meeting at the college.
2. Students are not allowed to paste any poster, pamphlet or fix banners on the wall. Graffiti on walls (wall- chalking), whether academic, social, religious or political, in the premises of the University or its constituent college / institute/ school, hospital area is not allowed.
3. During teaching hours, students are prohibited to play or roam around in the premises.

4. No students or groups of students shall arrange any programme, picnic, musical concert, sports, etc, on their own, without prior written permission from the authorities of the Institute.
5. University Identity Card (ID) should be displayed, at all times, when the students are within the premises of the University. Faculty members and security staff are authorized to check students' ID cards at any time.
6. If any student wants to publish his/her scientific or literary article, he/she must get the draft approved by the RLNC authorities. They are also required to submit the copy of the final article/ paper (to be published) for record purposes to the university.
7. Students are forbidden to address higher authorities directly. Any communication intended for higher authorities must be routed through proper channel (Students Advisor).
8. Unless specifically permitted, no student or group of students is allowed to enter administrative and department offices/ telephone exchange or teaching areas.
9. Students are required to attain a minimum of 85% attendance in the course for appearing in the examination as per PNC criteria.

EXPULSION:

If a student remains absent for more than three months without permission of the Principal, his/her admission shall be cancelled by the disciplinary committee of that faculty/Institute.

PROMOTION RULES

1. Those candidates who will fail/ be absent in any subject in the semester, can avail the opportunity to clear their subject by appearing in the respective semester.
2. The supplementary examination will be held after the completion of final semester within two weeks after the declaration of result. The dates of the supplementary examination will be displayed on notice board.
3. The candidate will be required to fill examination form and examination fee will be charged per subject.

FACILITIES AT RLNC

1. Classroom/Halls with Multimedia
2. Qualified and trained faculty members
3. Digital library
4. Skills lab
5. Biochemistry lab
6. Computer lab
7. Microbiology lab
8. Anatomy lab
9. Clinical facility
10. Canteen
11. Transport
12. Co-curricular activities/sports



Computer Lab of RMLC

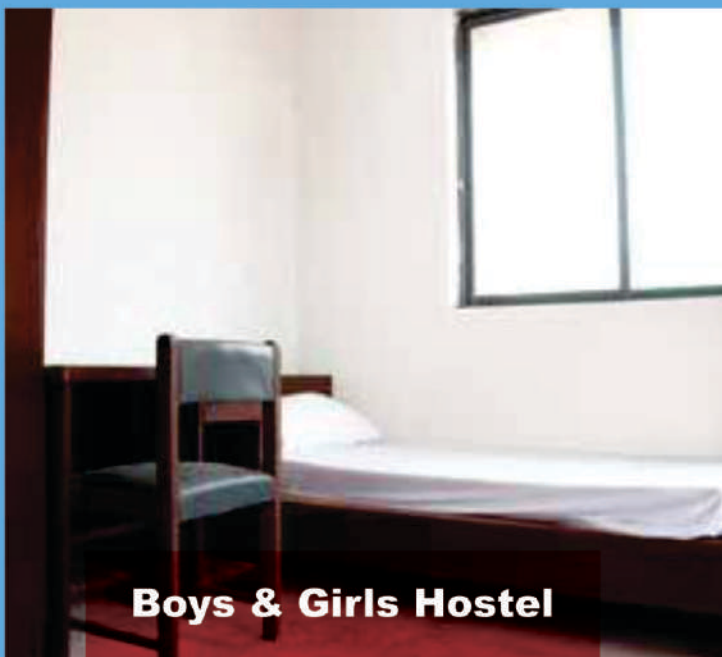
RMLC has a spacious computer lab with latest computers equipped with high bandwidth internet.

Located adjacent to the library, this lab makes an invaluable addition to the self learning facilities of the college. Its layout and space allows provision of computer workshops as and when required.

Classification of Student Categories

Printing | Scanning | E-Data | Plazerism | Wifi

Students are encouraged to generate a fulfilling and diversified environment at the college which is necessary for them to find a healthy and acceptable outlet for dissipating energy and steaming out their frustrations. The students manage a variety of clubs and committees through their own class representative to make the best of youthful and formative years. The college administration organizes trips for the pleasure and knowledge of students.



Boys & Girls Hostel

Hostels:

There are separate hostel blocks for boys and girls within the college campus. Provision of hostel accommodation is subject to availability and preference is given to candidates from outside Lahore.

Facilities provided are single/shared bedrooms, toilets and sitting rooms. Each section of the hostel is supervised by a member of the faculty/ administration. Essential staff like cleaners and security staff is provided. During their stay in hostels, students will have to adhere to the hostel rules and regulations as laid down by the college authorities. Hostel fee is subject to annual increase.



Student Life At RMLC

Students are encouraged to generate a fulfilling and diversified environment at the college which is necessary for them to find a healthy and acceptable outlet for dissipating energy and steaming out their frustrations. The students manage a variety of clubs and committees through their own class representative to make the best of youthful and formative years.

The college administration organizes trips for the pleasure and knowledge of students.

- › Dramatic Society
- › Music Society
- › Debating Society
- › Sports Society
- › Research Society
- › Blood Donation Society
- › Quiz Society
- › Literacy Society
- › Art & Design Society
- › Carrier Counselling Cell
- › Alumni Society
- › Elixir Club
- › Journal Club
- › Students Wellness Club
- › Adventure Club
- › Patient Welfare Club
- › Sports Clubs
(Football, Table Tennis,
Basketball, Volleyball,
Badminton, Cricket, Chess)
- › Students Development Program
(SDP)



Student Life At RMLC

Music Society

In the society we strive to promote dramatics as a vehicle to develop new skills and endeavor to provide supportive and open atmosphere upon which we can help our members evolve and grow. We have great fun and make unforgettable memories during learning and performing.

Muhammad Subhani

President Dramatics Society



Rlmc blood society is the most active society in Rlmc. It was officially incepted in Feb 2015. since then, Rlmc blood society has contributed in saving lives of patients, by arranging blood donors in both emergency and non emergency cases. we are also working with the Sundus foundation & various other blood banks with in the city.

Dr Zain khan
President Blood society

• www.rlmc.edu.pk •



I have been part of RLMC sports society from the 1st year and now I'm sports president. Represented RLMC in different institutions like LUMS and AIMC. As they say a healthy body has a healthy mind and being part of RLMC sports society helped me a lot to improve my skills onfield as well as off the field.





Student Life

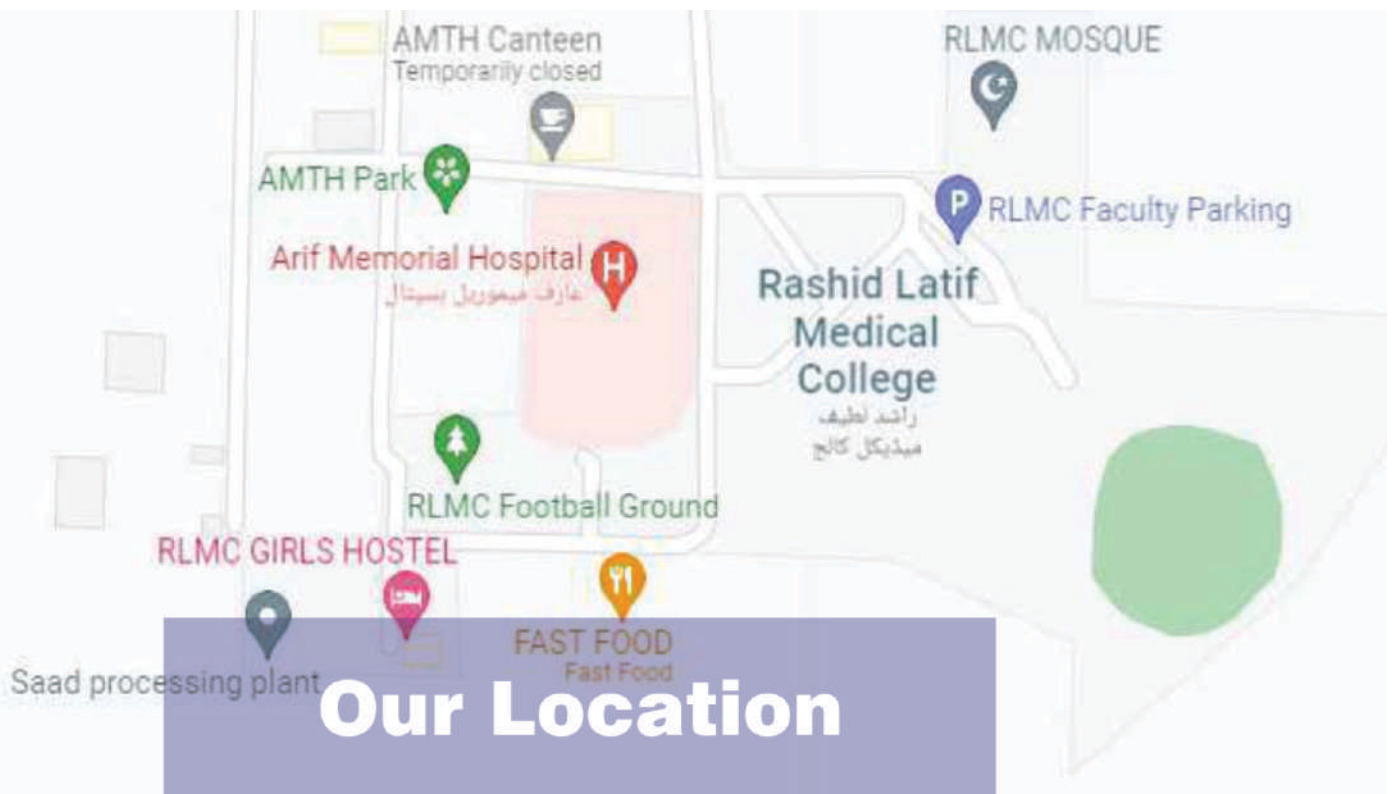




Student Life



ehsan
airha Sharif



Our Location

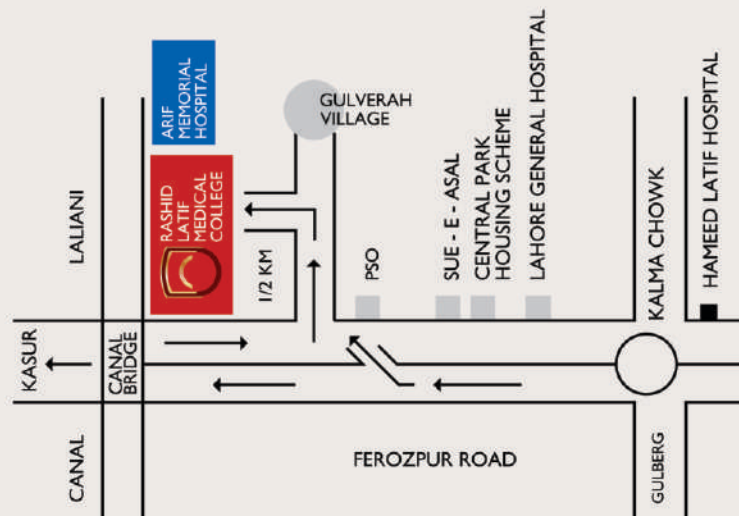


- **Lahore**
40 Minutes
from Ketchery
by Metro

- **Lahore**
30 Minutes
from Hameed Latif
Hospital

- **Lahore**
40 Minutes
from DHA

Our 28 acres purpose built campus lies in the suburbs of Lahore, away from the city pollution and rush hour traffic of the main city. It is set amongst lush green fields but within an easy drive of 30 to 40 mins to Gulberg and Defence areas. The green architecture is aesthetically pleasing and immensely eye catching in its simplicity and expanse. Various facilities within the campus aim to cater to academic as well as personal and social needs of the students. Campus life is busy and fun. Student transport services to various points in lahore strives to make commuting easy and hassle free for day scholars.





35-Km Ferozpur Road, Lahore-Pakistan.
Tel: +92 49 2451091-5 Fax: +92 49 2451099
E-mail: info@rlmc.edu.pk

The information in this publication is correct at the time of printing, but may be subject to change, RLMC reserves the right to change the content or method of assessment, to alter tuition fees, to withdraw any unit or program, to impose limitation on enrolment or to vary the arrangements for any unit program.